

SINGLE-ENDED BEAM

# RL3201 1WB-T

Stainless Steel, Environmentally Sealed, NTEP Certified 1:5,000 Class III Multiple Cell, Potted, IP67



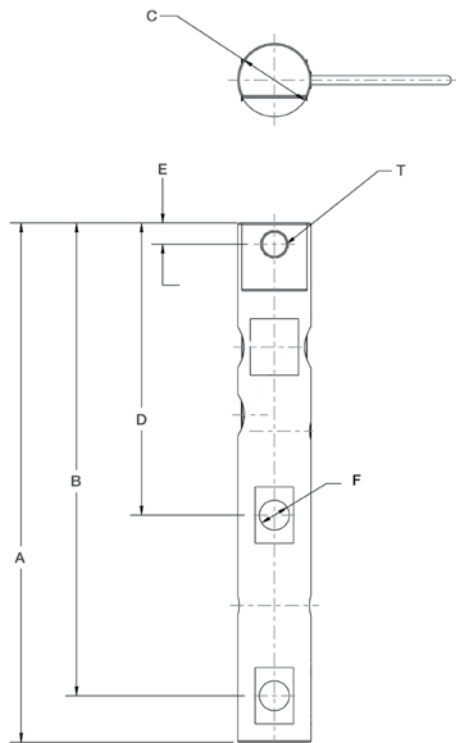
### Dimensions

Picture is a representation of actual product

Rated Capacity	A	B	C	D	E	F	T
lb/in							
1,250	11.50	10.47	1.25	6.47	0.47	0.53	1/2-13UNC
2,500	11.50	10.47	1.62	6.47	0.47	0.66	5/8-11 UNC
kg/mm							
566.99	292.1	265.9	31.75	164.3	24.6	13.46	—
1,134.0	292.1	265.9	41.14	164.3	24.6	16.76	—

### Order Information

Load Rating		Part #	Est. Weight	Price
1,250 lb	566.99 kg	<b>119796</b>	3 lb	Consult
2,500 lb	1,134.0 kg	<b>119797</b>	3 lb	Consult



### Interchangeable Products

AVERY WEIGH TRONIX®

Weigh Bar ..... —

### Specifications

**Full Scale Output:**

2.0 (± 0.1%) mV/V

**Output Resistance:**

350 (± 3) ohm

**Input Resistance:**

385 (± 10) ohm

**Material/Finish:**

Stainless steel

**Temperature:**

Compensated range  
14°F to 104°F/-10°C to 40°C

Operating range  
-40°F to 150°F/-40°C to 65°C

**Safe Overload:**

150% full scale

**Safe Sideload:**

100% full scale

**Rated Excitation:**

5-10 VDC

**Combined Error:**

0.02% full scale

**Non-Repeatability:**

± 0.01% full scale

**Insulation Resistance:**

5,000 megohms

**Cable Color Code:**

Green ..... + Excitation

Black ..... - Excitation

White ..... + Signal

Red ..... - Signal

**Seal Type:**

Environmentally sealed, IP67

**Cable Length:**

20 ft (6.1 m)

**Cable Diameter:**

0.190 polyurethane jacket

**Warranty:**

Two-year limited warranty

**Approvals:**

