

RL7000SS

Stainless Steel, Environmentally Sealed, NTEP Certified 1:5,000 Class III/1:10,000 III/L Multiple Cell, IP67



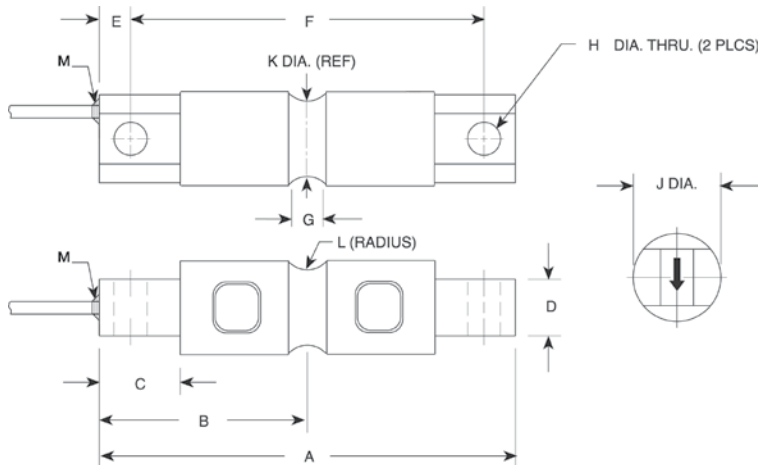
Dimensions

Picture is a representation of actual product

Rated Capacity	A	B	C	D	E	F	G	H	J	K	L	M
lb/in												
5,000-10,000	8.12	4.06	1.44	1.12	0.62	6.88	0.62	0.66	1.70	1.48	0.50	1/4-18 NPT
20,000	8.12	4.06	1.44	1.12	0.62	6.88	0.84	0.66	1.95	1.48	0.50	1/4-18 NPT
30,000-60,000	10.25	5.12	1.88	2.37	0.88	8.50	1.00	1.06	3.20	2.73	1.00	1/2-14 NPT
100,000	11.25	5.62	1.88	2.50	0.88	9.50	1.00	1.06	3.50	3.24	1.50	1/2-14 NPT
150,000	11.25	5.62	1.88	2.80	0.88	9.50	1.25	1.06	3.90	3.64	1.50	1/2-14 NPT
kg/mm												
2,268.0-4,535.9	206.3	103.1	36.6	28.5	15.8	174.8	15.8	16.8	43.2	37.6	12.7	1/4-18 NPT
9,071.9	206.3	103.1	36.6	28.5	15.8	174.8	21.3	16.8	49.5	37.6	12.7	1/4-18 NPT
13,607.8-27,215.6	260.4	130.1	47.8	60.2	22.4	215.9	25.4	26.9	81.3	69.3	25.4	1/2-14 NPT
45,359.4	285.8	142.8	47.8	63.5	22.4	241.3	25.4	26.9	88.9	82.3	38.1	1/2-14 NPT
68,038.9	285.8	142.8	47.8	71.1	22.4	241.3	31.8	26.9	99.1	92.5	38.1	1/2-14 NPT

Order Information

Load Rating	Part #	Est. Weight	Price
NTEP Certified			
10,000 lb	30432	5 lb	Consult
20,000 lb	30433	6 lb	Consult
30,000 lb	30434	22 lb	Consult
40,000 lb	30435	22 lb	Consult
50,000 lb	30436	22 lb	Consult
60,000 lb	30437	22 lb	Consult
100,000 lb	30444	30 lb	Consult
Non-NTEP Certified			
5,000 lb	30431	5 lb	Consult
150,000 lb	30445	30 lb	Consult



Interchangeable Products

VPG REVERE®

9103 page 292

METTLER TOLEDO®

SLD-530 —

Weigh Module Available

RICE LAKE WEIGHING SYSTEMS

EZ Mount 1 page 84

Specifications

Full Scale Output:

3.0 mV/V

Output Resistance:

700 (± 7) ohm

Input Resistance:

700 (± 7) ohm

Material/Finish:

Stainless steel

Temperature:

Compensated range
0°F to 150°F/-18°C to 65°C
Operating range
-40°F to 150°F/-40°C to 65°C

Safe Overload:

150% full scale

Safe Sideload:

100% full scale

Rated Excitation:

5-10 V AC/DC (15 V max)

Non-repeatability:

0.02% full scale

Combined Error:

0.03% full scale

Insulation Resistance:

5,000 megohms

Deflection at Capacity:

5,000 lb=0.02 in (0.5 mm)
10,000 lb=0.025 in (.6 mm)
20,000 lb=0.042 in (1.1 mm)
30,000 lb-50,000 lb=0.02 in (0.5 mm)
60,000 lb=0.025 in (0.6 mm)
100,000-150,000 lb=0.02 in (0.5 mm)

Seal Type:

Environmentally sealed, IP67

Cable Length:

5,000 lb-150,000 lb=30 ft (10 m)

Cable Diameter:

0.295 polyurethane jacket

Cable Color Code:

Red + Excitation
Black - Excitation
Green + Signal
White - Signal

Warranty:

Two-year limited warranty

Approvals:

