

RL75016WHE

Stainless Steel, Hermetically Sealed, IP69K



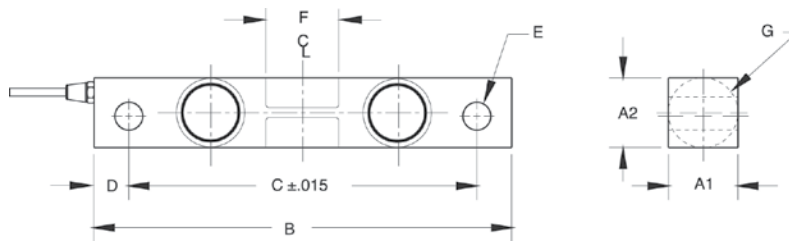
Dimensions

Picture is a representation of actual product

Rated Capacity	A1	A2	B	C	D	E	F	G	CONDUIT ADAPTER
lb/in									
1,000-5,000	1.22	1.22	7.50	6.25	0.62	0.50	1.12	1.25	1/2-14 NPT
10,000-25,000	1.44	1.94	8.75	7.50	0.62	0.81	1.62	1.99	1/2-14 NPT
kg/mm									
453.6-2,268.0	31.0	31.0	190.5	158.8	15.7	12.7	28.4	31.8	1/2-14 NPT
4,535.9-11,339.8	36.6	49.3	222.3	190.5	15.7	20.6	41.1	50.5	1/2-14 NPT

Order Information

Load Rating		Part#	Est. Weight	Price
1,000 lb	453.6 kg	67043	4 lb	Consult
1,500 lb	680.4 kg	67044	4 lb	Consult
2,000 lb	907.2 kg	67045	4 lb	Consult
2,500 lb	1,124.0 kg	67046	4 lb	Consult
5,000 lb	2,268.0 kg	67047	4 lb	Consult
10,000 lb	4,535.9 kg	67048	7 lb	Consult
15,000 lb	6,803.9 kg	67049	7 lb	Consult
20,000 lb	9,071.8 kg	67050	7 lb	Consult
25,000 lb	11,339.8 kg	67051	7 lb	Consult



Interchangeable Products

- RICE LAKE WEIGHING SYSTEMS
RL75016SS* page 158
 - RICE LAKE WEIGHING SYSTEMS
RL75016SS-W* page 159
 - VPG CELTRON®
DSR-HSS* page 221
 - VPG SENSORTRONICS®
65016W* page 329
 - VPG SENSORTRONICS®
65016WH page 330
- *Welded seal*

Weigh Module Available

- RICE LAKE WEIGHING SYSTEMS
RL1600 Series page 90 and page 92

Specifications

- Full Scale Output:**
3.0 mV/V
- Output Resistance:**
699-707 ohm
- Input Resistance:**
686-714 ohm
- Material/Finish:**
Stainless steel
- Temperature:**
Operating range
-40° F to 150° F / -40° C to 65° C
- Safe Overload:**
150% full scale
- Safe Sideload:**
100% full scale
- Rated Excitation:**
5-10 VDC (15 V maximum)
- Total Error:**
0.03% full scale
- Insulation Resistance:**
2,000 megohms
- Seal Type:**
Hermetically sealed, IP69K
- Cable Length:**
25 ft (7.6 m)
- Cable Diameter:**
0.200 polyurethane jacket
- Cable Color Code:**
Red + Excitation
Black - Excitation
Green + Signal
White - Signal
- Warranty:**
Two-year limited warranty

Approvals:

