

Minebea Intec Combics

Bench and Floor Platform Scales

Specifications

Cable Length:

10 ft/3 m-up to 1,000 lb 30 x 30 in
20 ft/6 m 1,000 lb and above 36 x 36 in

Operating Temperature:

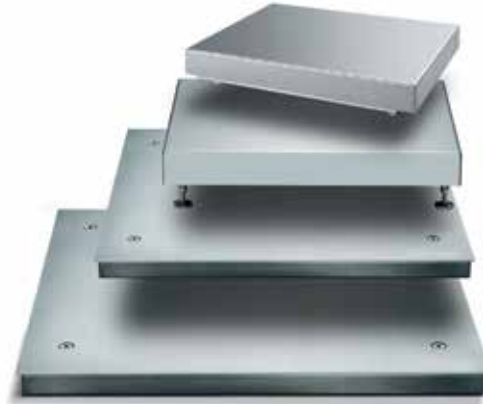
14° F to 104° F (-10° C to 40° C)

Height:

Adjustable feet

Warranty:

Two-year limited warranty
Accessories: One-year limited warranty



Standard Features

- One or four load cells (as noted)
- Complete selection of pit frames for flush mounting available
- High resolution 30,000 d versions available
- Compatible with all Combics indicators
- Mild steel painted
- NEMA Type 4/IP65 protection rating
- 304 stainless steel platters
- Stainless steel
- IP67/NEMA Type 4X-cell/IP68/4 cell systems
- 304 stainless steel
- Hermetically sealed, IP68 load cells

Optional Configurations

- R2 - Electropolished 316T, stainless steel
- Ti - Pressure lift system
- Drive-on ramps
- Pit frame

Minebea Intec Combics

Painted/Stainless Steel

Part Number/Price

RLWS PN	Minebea PN	Dimensions	Foot Adjustable Height	# Load Cells	Capacity Readability	Capacity Readability	Capacity Readability	Est. Weight	Price
Painted Steel									
102285	CAPP1U-10CC-LU	10 x 10 in	2.7 in - 3.6 in	1	15 lb	0.0005	6 kg	0.0002	14 lb Consult
102286	CAPP1U-20CC-LU	10 x 10 in	2.7 in - 3.6 in	1	30 lb	0.001	15 kg	0.0005	14 lb Consult
102287	CAPP1U-50CC-LU	10 x 10 in	2.7 in - 3.6 in	1	60 lb	0.002	30 kg	0.001	14 lb Consult
102288	CAPP1U-50DD-LU	12 x 12 in	3.6 in - 4.5 in	1	60 lb	0.002	30 kg	0.001	18 lb Consult
102291	CAPP1U-100DD-LU	12 x 12 in	3.6 in - 4.5 in	1	150 lb	0.005	60 kg	0.002	18 lb Consult
102289	CAPP1U-50EE-LU	18 x 18 in	3.5 in - 4.4 in	1	60 lb	0.002	30 kg	0.001	64 lb Consult
102292	CAPP1U-100EE-LU	18 x 18 in	3.5 in - 4.4 in	1	150 lb	0.005	60 kg	0.002	64 lb Consult
102297	CAPP1U-200EE-LU	18 x 18 in	3.5 in - 4.4 in	1	200 lb	0.01	100 kg	0.005	64 lb Consult
102294	CAPP1U-100GG-LU	24 x 24 in	5.7 in - 6.7 in	1	150 lb	0.005	60 kg	0.002	121 lb Consult
102299	CAPP1U-250GG-LU	24 x 24 in	5.9 in - 6.4 in	1	300 lb	0.01	150 kg	0.005	121 lb Consult
102302	CAPP1U-500GG-LU	24 x 24 in	5.7 in - 6.7 in	1	600 lb	0.02	300 kg	0.01	121 lb Consult
102296	CAPP1U-100HH-LU	30 x 30 in	5.71 in - 6.71 in	1	150 lb	0.005	60 kg	0.002	187 lb Consult
102301	CAPP1U-250HH-LU	30 x 30 in	5.71 in - 6.71 in	1	300 lb	0.01	150 kg	0.005	187 lb Consult
102304	CAPP1U-500HH-LU	30 x 30 in	5.71 in - 6.71 in	1	600 lb	0.02	300 kg	0.01	187 lb Consult
102306	CAPP1U-1000HH-LU	30 x 30 in	5.71 in - 6.71 in	1	1500 lb	0.05	600 kg	0.02	187 lb Consult
Pit Frames									
104313	YEG-HG-PUS	30 x 24 in (HG)							Consult
104314	YEG-HH-PUS	30 X 30 in (HH)							Consult
104315	YPF01KKP-MUS	36 x 36 in (KK)							Consult
Stainless Steel									
102429	CAPS1U-10CC-LU	10 x 10 in	2.6 in - 3.4 in	1	15 lb	0.0005	6 kg	0.0002	16 lb Consult
102430	CAPS1U-20CC-LU	10 x 10 in	2.6 in - 3.4 in	1	30 lb	0.001	15 kg	0.0005	16 lb Consult
102431	CAPS1U-50CC-LU	10 x 10 in	2.6 in - 3.4 in	1	60 lb	0.002	30 kg	0.001	16 lb Consult
102432	CAPS1U-50DD-LU	12 x 12 in	3.3 in - 4.4 in	1	60 lb	0.002	30 kg	0.001	24 lb Consult
102433	CAPS1U-100DD-LU	12 x 12 in	3.5 in - 4.4 in	1	150 lb	0.005	60 kg	0.002	24 lb Consult
102434	CAPS1U-50EE-LU	18 x 18 in	3.5 in - 4.4 in	1	60 lb	0.002	30 kg	0.001	62 lb Consult
102435	CAPS1U-100EE-LU	18 x 18 in	3.5 in - 4.4 in	1	150 lb	0.005	60 kg	0.002	62 lb Consult
102436	CAPS1U-200EE-LU	18 x 18 in	3.5 in - 4.4 in	1	200 lb	0.01	100 kg	0.005	62 lb Consult
102458	CAPS4U-100GG-LU	24 x 24 in	3.4 in - 3.6 in	4	150 lb	0.005	60 kg	0.002	121 lb Consult
102460	CAPS4U-250GG-LU	24 x 24 in	3.4 in - 3.6 in	4	300 lb	0.01	150 kg	0.005	121 lb Consult
102461	CAPS4U-500GG-LU	24 x 24 in	3.4 in - 3.6 in	4	600 lb	0.02	300 kg	0.01	121 lb Consult
102466	CAPS4U-100HH-LU	30 x 30 in	3.4 in - 3.6 in	4	150 lb	0.005	60 kg	0.002	187 lb Consult
102467	CAPS4U-250HH-LU	30 x 30 in	3.4 in - 3.6 in	4	300 lb	0.01	150 kg	0.005	187 lb Consult
102468	CAPS4U-500HH-LU	30 x 30 in	3.4 in - 3.6 in	4	600 lb	0.02	300 kg	0.01	187 lb Consult
102469	CAPS4U-1000HH-LU	30 x 30 in	3.4 in - 3.6 in	4	1500 lb	0.05	600 kg	0.02	187 lb Consult
102470	CAPS4U-1000KK-LU	36 x 36 in	3.5 in	4	1500 lb	0.05	600 kg	0.02	250 lb Consult
102471	CAPS4U-2500KK-LU	36 x 36 in	3.5 in	4	3000 lb	0.1	1500 kg	0.05	250 lb Consult
102472	CAPS4U-5000KK-LU	36 x 36 in	3.5 in	4	6000 lb	0.2	3000 kg	0.1	250 lb Consult
102473	CAPS4U-1000NN-LU	48 x 48 in	3.5 in	4	1500 lb	0.05	600 kg	0.02	390 lb Consult
102474	CAPS4U-2500NN-LU	48 x 48 in	3.5 in	4	3000 lb	0.1	1500 kg	0.05	390 lb Consult
102475	CAPS4U-5000NN-LU	48 x 48 in	3.5 in	4	6000 lb	0.2	3000 kg	0.1	390 lb Consult
Pit Frames									
104320	YEG-HG-SUS	30 x 24 in (HG)							Consult
104322	YEG-HH-SUS	30 X 30 in (HH)							Consult
104323	YPF01KKT-MUS	36 x 36 in (KK)							Consult
104324	YPF01NNT-MUS	48 x 48 in (NN)							Consult

PRECISION INDUSTRIAL WEIGHING

www.ricelake.com | Phone: 800-472-6703

RICE LAKE