

Interchangeable Products

RICE LAKE WEIGHING SYSTEMS

RL35023 (threaded version) ... page 139

VPG CELTRON®

SQB..... page 218

Weigh Module Available

RICE LAKE WEIGHING SYSTEMS

RL50210 TA..... page 54

RICE LAKE WEIGHING SYSTEMS

RL1800 Series..... page 66



APPROVALS



Specifications

Full Scale Output:
3.0 mV/V

Output Resistance:
349-355 ohms

Input Resistance:
343-357 ohms

Material/Finish:
High-alloy steel, nickel plated

Temperature:
Compensated range:
14°F to 104°F (-10°C to 40°C)
Operating range:
0°F to 150°F (-18°C to 65°C)

Seal Type:
Environmentally sealed, IP67

Safe Overload:
150% full scale

Safe Sideload:
100% full scale

Rated Excitation:
5- 10 V DC (15 V maximum)

Nonlinearity:
0.03% full scale

Hysteresis:
0.02% full scale

Insulation Resistance:
5,000 megohms

Deflection at Capacity:
500 lb-1,500 lb=0.013 in (0.33 mm),
1,000 lb-5,000 lb=0.017 in-0.025 in
(0.42 mm-0.64 mm)
5,000 lb-10,000 lb=0.025 in-0.035 in
(0.64 mm-0.89 mm)
15,000 lb-20,000 lb=0.048 in-0.013 in
(1.22 mm-0.33 mm)

Cable Length:
20 ft (6.1 m)
50 ft (15.2 m) - pn 196716

Cable Diameter:
0.200 polyurethane jacket

Cable Color Code:
Red +Excitation
Black -Excitation
Green +Signal
White -Signal

Warranty:
One-year limited warranty

Approvals:
cFMus
NTEP

Dimensions

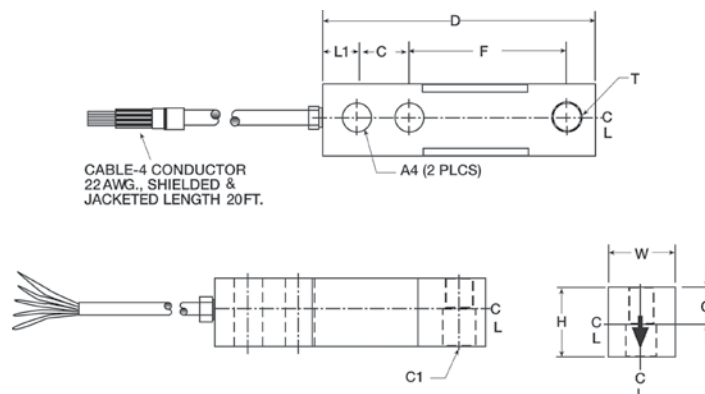
Picture is a representation of actual product

Rated Capacity	T	L1	C1	W	H	D	C	F	G
lb/in									
250-500	1/2-20 UNF	0.62	0.53	1.25	1.00	5.12	1.00	3.00	0.50
1,000-5,000 SE	1/2-20 UNF	0.62	0.53	1.25	1.25	5.12	1.00	3.00	0.62
5,000 LE -10,000	3/4-16 UNF	0.75	0.78	1.50	1.50	6.75	1.50	3.75	0.75
15,000-20,000	1-14 UNS	1.00	1.03	2.00	2.00	8.88	2.00	4.88	1.00
kg/mm									
113.4-226.8	1/2-20 UNF	15.8	13.5	31.8	25.4	130.1	25.4	76.2	12.7
453.6-1,814.4	1/2-20 UNF	15.8	13.5	31.8	31.8	130.1	25.4	76.2	12.7
2,268.0-4,535.9	3/4-16 UNF	19.1	19.8	38.1	38.1	171.5	38.1	95.3	19.1
6,803.9-9,071.9	1-14 UNS	25.4	26.2	50.8	50.8	225.6	50.8	124.0	25.4

Order Information

Load Rating	Part#	Est. Weight	Price
NTEP Certified			
1,000 lb	21507	3 lb	Consult
1,500 lb	69832	3 lb	Consult
2,000 lb	21508	3 lb	Consult
2,500 lb	21509	3 lb	Consult
3,000 lb	21510	3 lb	Consult
4,000 lb	21511	3 lb	Consult
5,000 lb SE	102884	3 lb	Consult
5,000 lb SE	196716	3 lb	Consult
5,000 lb LE	21512	5 lb	Consult
10,000 lb	21513	5 lb	Consult
Non-NTEP Certified			
250 lb	176426	3 lb	Consult
500 lb	17125	3 lb	Consult
15,000 lb	17155	9 lb	Consult
20,000 lb	17159	10 lb	Consult
NTEP Certified			
50ft cable	196716		Consult

SE=small envelope; LE=large envelope



CABLE-4 CONDUCTOR
22 AWG., SHIELDED &
JACKETED LENGTH 20FT.

