

Stainless Steel, Environmentally Sealed, NTEP Certified 1:5,000 Class III Multiple Cell, IP67

Interchangeable Products

RICE LAKE WEIGHING SYSTEMS

RL35023S..... page 140

VPG SENSORTRONICS®

65023SS..... page 322**Weigh Module Available**

RICE LAKE WEIGHING SYSTEMS

RL50210 TA..... page 54

RICE LAKE WEIGHING SYSTEMS

RL1800 Series..... page 66**Specifications****Full Scale Output:**

3.0 mV/V

Output Resistance:

349-355 ohms

Input Resistance:

343-357 ohms

Material/Finish:

Stainless steel

Temperature:

Compensated range

14°F to 104°F (-10°C to 40°C)

Operating range

0°F to 150°F (-18°C to 65°C)

Seal Type:

Environmentally sealed, IP67

Safe Overload:

150% full scale

Rated Excitation:

5- 10 V DC (15 V maximum)

Combined Error:

0.02% full scale

Insulation Resistance:

5,000 megohms

Deflection at Capacity:

500 lb-1,500 lb=0.013 in (0.33 mm),

1,000 lb-5,000 lb=0.017 in-0.025 in

(0.42 mm-0.64 mm),

5,000 lb-10,000 lb=0.025 in-0.035 in

(0.64 mm-0.89 mm),

15,000 lb-20,000 lb=0.048 in-0.013 in

(1.22 mm-0.33 mm)

Cable Length:

20 ft (6.1 m)

Cable Color Code:

Red +Excitation

Black -Excitation

Green +Signal

White -Signal

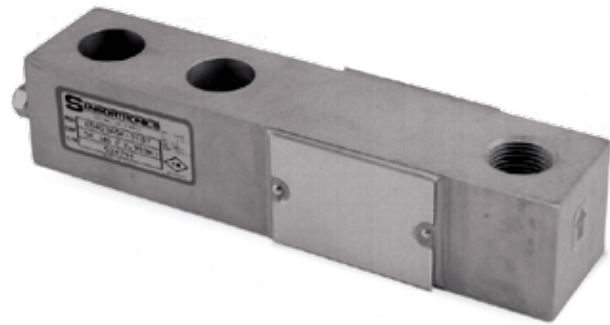
Warranty:

One-year limited warranty

Approvals:

cFMus

NTEP

APPROVALS**Dimensions**

Picture is a representation of actual product

| Rated Capacity | A1 | A2 | A3 | B | C | D | E | F | G |
|-----------------|------------|------|------|------|------|-------|------|------|------|
| lb/in | | | | | | | | | |
| 1,000-4,000 | 1/2-20 UNF | 0.62 | 0.53 | 1.00 | 1.25 | 5.12 | 1.00 | 3.00 | 0.50 |
| 5,000-10,000 | 3/4-16 UNF | 0.75 | 0.78 | 1.50 | 1.50 | 6.75 | 1.50 | 3.75 | 0.75 |
| kg/mm | | | | | | | | | |
| 453.6-1,814.4 | 1/2-20 UNF | 15.8 | 13.5 | 31.8 | 31.8 | 130.1 | 25.4 | 76.2 | 12.7 |
| 2,268.0-4,535.9 | 3/4-16 UNF | 19.1 | 19.8 | 38.1 | 38.1 | 171.5 | 38.1 | 95.3 | 19.1 |

Order Information

| Load Rating | Part# | Est. Weight | Price |
|----------------------|------------|---------------|--------------|
| Threaded Hole | | | |
| 1,000 lb | 453.6 kg | 28925 | 3 lb Consult |
| 2,000 lb | 907.2 kg | 28926 | 3 lb Consult |
| 2,500 lb | 1,134.0 kg | 28927 | 3 lb Consult |
| 2,500 lb* | 1,134.0 kg | 170030 | 3 lb Consult |
| 4,000 lb | 1,814.4 kg | 28929 | 3 lb Consult |
| 5,000 lb | 2,268.0 kg | 28930 | 5 lb Consult |
| 10,000 lb | 4,535.9 kg | 28931 | 5 lb Consult |

*65023S 2,500 lb- 5513, low-profile 0.75 inches tall

