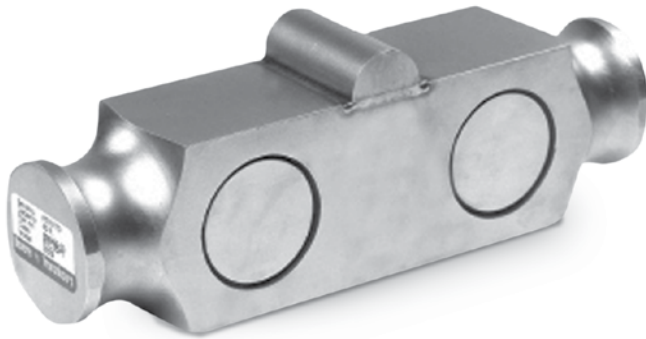


# 9323

Stainless Steel, Environmentally Sealed, NTEP Certified 1:10,000 Class III Multiple Cell, IP67



## APPROVALS



## Interchangeable Products

NV TECHNOLOGY®  
**BLC-1-N-WP**.....—

## Specifications

- Full Scale Output:**  
3.0 mV/V
- Output Resistance:**  
700 (± 7) ohm
- Input Resistance:**  
700 (± 7) ohm
- Material/Finish:**  
Stainless steel
- Temperature:**  
Compensated range  
14°F to 104°F (-10°C to 40°C)  
Operating range  
0°F to 150°F (-18°C to 65°C)
- Seal Type:**  
Environmentally sealed, IP67
- Safe Overload:**  
150% full scale
- Safe Sideload:**  
100% full scale
- Rated Excitation:**  
5- 10 VDC (15 V maximum)
- Non-repeatability:**  
0.01% full scale
- Combined Error:**  
0.02% full scale
- Insulation Resistance:**  
5,000 megohms
- Cable Length:**  
30 ft (9.2 m)
- Cable Diameter:**  
0.295 polyurethane jacket
- Cable Color Code:**  
Red -Excitation  
Black -Excitation  
Green +Signal  
White -Signal
- Warranty:**  
One-year limited warranty
- Approvals:**  
cFMus  
NTEP

## Dimensions

Picture is a representation of actual product

Rated Capacity	A	B	C	E	F	G	H	J	K	P
lb/in										
50,000-60,000	8.50	2.45	1.95	7.25	3.63	0.63	0.75	1.75	2.00	3.00
kg/mm										
22,679.6-29,483.5	190.4	62.2	50.0	184.2	92.2	16.0	19.1	44.5	50.8	76.2

## Order Information

Load Rating	Part#	Est. Weight	Price
50,000 lb	84156	13 lb	Consult
60,000 lb	84157	13 lb	Consult

