

# H35

Stainless Steel, Welded Seal, NTEP Certified 1:5,000 Class III Multiple Cell, IP67



## APPROVALS



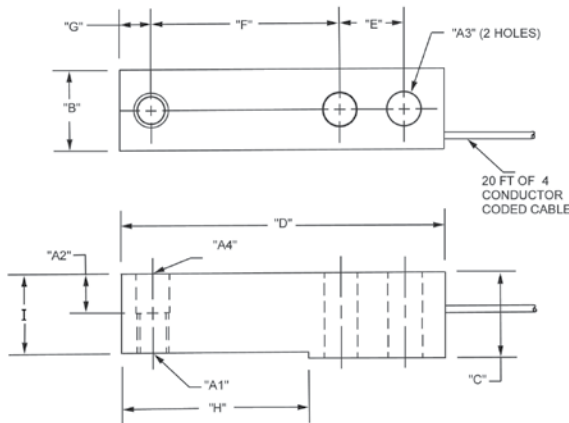
## Dimensions

Picture is a representation of actual product

Rated Capacity	A1	A2	A3	A4	B	C	D	E	F	G	H	I
lb/in												
500-5,000	1/2-20 UNF-2B	0.62	0.53	0.53	1.21	1.19	5.12	1.00	3.00	0.50	2.85	1.120
kg/mm												
453.6-2,268.0	1/2-20 UNF-2B	15.8	13.5	13.5	30.7	30.2	130.05	25.4	76.2	12.7	72.4	28.4

## Order Information

Load Rating		Part#	Est. Weight	Price
500 lb	226.8 kg	<b>84818</b>	3 lb	Consult
1,000 lb	453.6 kg	<b>64876</b>	3 lb	Consult
2,500 lb	1,134.0 kg	<b>64877</b>	3 lb	Consult
4,000 lb	1,814.4 kg	<b>64878</b>	3 lb	Consult
5,000 lb	2,268.0 kg	<b>64879</b>	3 lb	Consult



## Interchangeable Products

RICE LAKE WEIGHING SYSTEMS

**RLH35**..... page 135

METTLER TOLEDO®

**500 lb-8 ft cable** ..... TB601019-008

**1,000 lb-20 ft cable** TB601016-020

**2,500 lb-8 ft cable**.. TB601016-008

**4,000 lb-20 ft cable** TB601017-020

**5,000 lb-8 ft cable**.. TB601018-008

METTLER TOLEDO

**500 lb** ..... TB600830-020

METTLER TOLEDO

**1,000 lb**..... TB600831-020

METTLER TOLEDO

**2,000 lb**..... TB600832-020

METTLER TOLEDO

**2,500 lb**..... TB600833-020

## Specifications

### Full Scale Output:

3.0 mV/V

### Output Resistance:

350 (± 3) ohms

### Input Resistance:

385 ohms, nominal

### Material/Finish:

Stainless steel

### Temperature:

Compensated range  
14°F to 104°F (-10°C to 40°C)  
Operating range  
0°F to 150°F (-18°C to 65°C)

### Seal Type:

Welded-seal, IP67

### Safe Overload:

150% Full scale

### Safe Sideload:

100% Full scale

### Rated Excitation:

5- 10 V DC (15 V maximum)

### Combined Error:

0.02% full scale

### Insulation Resistance:

5,000 megohms

### Cable Length:

20 ft (6.1 m)

### Cable Diameter:

0.190 polyurethane jacket

### Cable Color Code:

Green +Excitation  
Black -Excitation  
White +Signal  
Red -Signal  
Yellow Shield

### Warranty:

One-year limited warranty

### Approvals:

FM  
NTEP