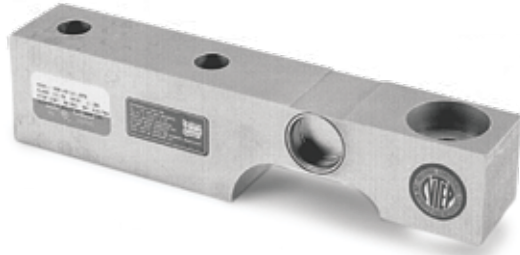


# SSB

Stainless Steel, Welded Seal, NTEP Certified 1:10,000 Class IIIIL Single Cell, IP67



## APPROVALS



## Interchangeable Products

RICE LAKE WEIGHING SYSTEMS

**RLSSB**..... page 146

HBM®

**SB3**..... —

## Weigh Module Available

RICE LAKE WEIGHING SYSTEMS

**RL1900 Series**..... page 68

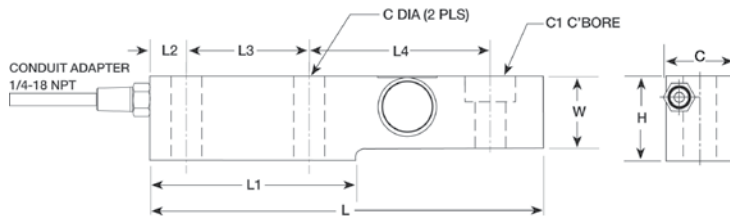
## Dimensions

Picture is a representation of actual product

Rated Capacity	C	W	C1	H	L	L1	L2	L3	L4	CONDUIT ADAPTER
<b>lb/in</b>										
1,000-5,000	0.53	1.44	1.19 x 0.56 DP	1.88	8.00	4.00	0.75	2.50	3.87	1/4-18NPT
10,000	0.88	1.88	1.63 x 0.62 DP	2.75	9.25	4.62	0.81	2.62	4.87	1/4-18NPT
<b>kg/mm</b>										
453.6-2,268.0	14	36.5	30.2 x 16.7 DP	47.8	203.2	101.6	19.05	63.5	98	1/4-18NPT
4,535.9	22	47.5	41.4 x 25.4 DP	69.9	235.0	117.3	20.5	66.5	123.6	1/4-18NPT

## Order Information

Load Rating	Part #	Est. Weight	Price
1,000 lb	21538	5 lb	Consult
2,000 lb	21539	5 lb	Consult
5,000 lb	21540	5 lb	Consult
10,000 lb	21541	10 lb	Consult



## Specifications

### Full Scale Output:

2.0 mV/V

### Output Resistance:

350 (± 3.5) ohm

### Input Resistance:

350 (± 3.5) ohm

### Material/Finish:

Stainless steel

### Temperature:

Compensated range  
14°F to 104°F (-10°C to 40°C)  
Operating range  
0°F to 150°F (-18°C to 65°C)

### Seal Type:

Welded-seal, IP67

### Safe Overload:

150% full scale

### Safe Sideload:

100% full scale

### Rated Excitation:

5- 10 VDC (15 V maximum)

### Combined Error:

0.02% full scale

### Non-repeatability:

0.01% full scale

### Insulation Resistance:

5,000 megohms

### Deflection at Capacity:

1,000 lb-10,000 lb=0.018 in (0.45 mm)

### Cable Length:

15 ft (4.6 m)

### Cable Color Code:

Green +Excitation  
Black -Excitation  
White +Signal  
Red -Signal

### Warranty:

One-year limited warranty

### Approvals:

cFMus  
NTEP