

# RL1800 Series Coated Load Cell Version

Stainless Steel Weigh Modules



Picture is a representation of actual product.

## Load Cell Approvals



## Complete Kit Includes

- Three or four RL1800 stainless steel compression mounts with RL32018 coated NTEP Certified stainless steel single-ended beam load cells
- One JB4SS NEMA Type 4X stainless steel signal trim junction box
- 25 ft of hostile environment EL147HE SURVIVOR® load cell cable

## Standard Features

- Capacities (per module): 1,000 to 10,000 lb
- NTEP Certified cells in 1,000 to 10,000 lb capacities
- Stainless steel mounts
- Center-pivoted, tension loading design
- Self-checking, multi-directional movement
- Load is suspended on high-strength bolt instead of wire rope
- Design incorporates spherical washers for self centering
- Coated load cells for corrosion protection

## Applications

- Conveyors
- Medium-capacity tanks and hoppers

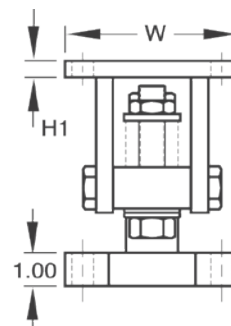
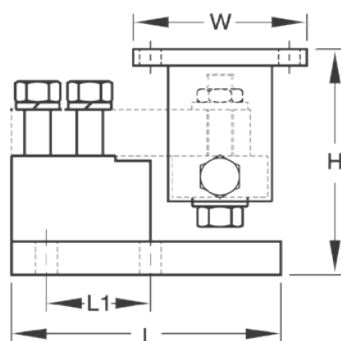
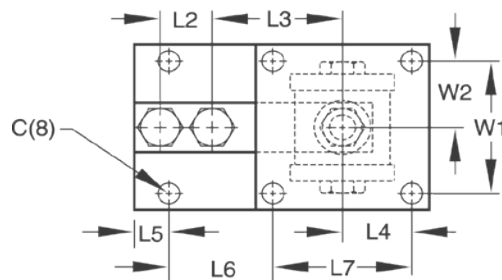
## Stainless Steel Order Information

Load Rating (Per Module)	Part #	Price
<b>Single Module (Does NOT Include Load Cell)</b>		
1,000 lb-4,000 lb	<b>17818</b>	Consult
5,000 lb-10,000 lb	<b>17820</b>	Consult
<b>3-Module Kit</b>		
1,000 lb	<b>219894</b>	Consult
1,500 lb	<b>219896</b>	Consult
2,000 lb	<b>219898</b>	Consult
2,500 lb	<b>219900</b>	Consult
3,000 lb	<b>219902</b>	Consult
4,000 lb	<b>219904</b>	Consult
5,000SE lb	<b>219906</b>	Consult
5,000LE lb	<b>219908</b>	Consult
10,000 lb	<b>219910</b>	Consult
<b>4-Module Kit</b>		
1,000 lb	<b>219895</b>	Consult
1,500 lb	<b>219897</b>	Consult
2,000 lb	<b>219899</b>	Consult
2,500 lb	<b>219901</b>	Consult
3,000 lb	<b>219903</b>	Consult
4,000 lb	<b>219905</b>	Consult
5,000SE lb	<b>219907</b>	Consult
5,000LE lb	<b>219909</b>	Consult
10,000 lb	<b>219911</b>	Consult

SE=Small envelope; LE=Large envelope

## Dimensions

Rated Capacity	C	H Min/Max	H1	L	L1	L2	L3	L4	L5	L6	L7	W	W1	W2
<b>lb/in</b>														
1,000 to 5,000SE	0.62	5.25/5.56	0.50	6.00	2.00	1.00	3.00	2.00	0.68	1.94	4.00	5.00	4.00	2.00
5,000LE to 10,000	0.62	6.12/6.62	0.50	7.75	3.00	1.50	3.75	2.00	1.03	2.97	4.00	5.00	4.00	2.00



WEIGH MODULES