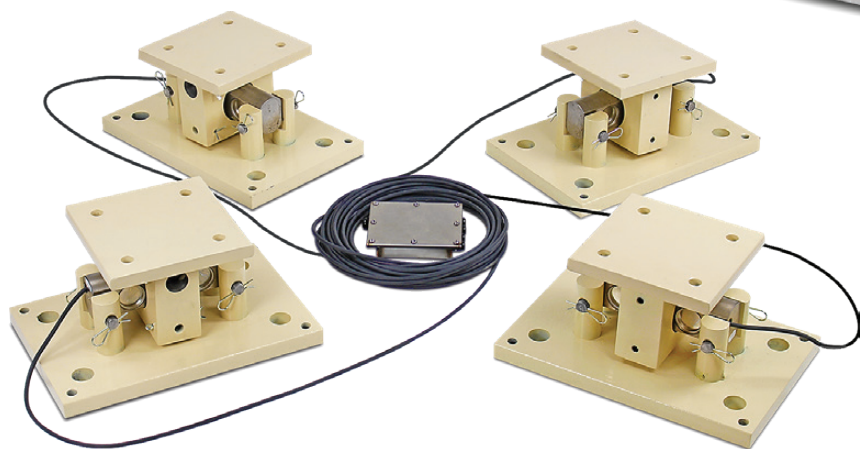
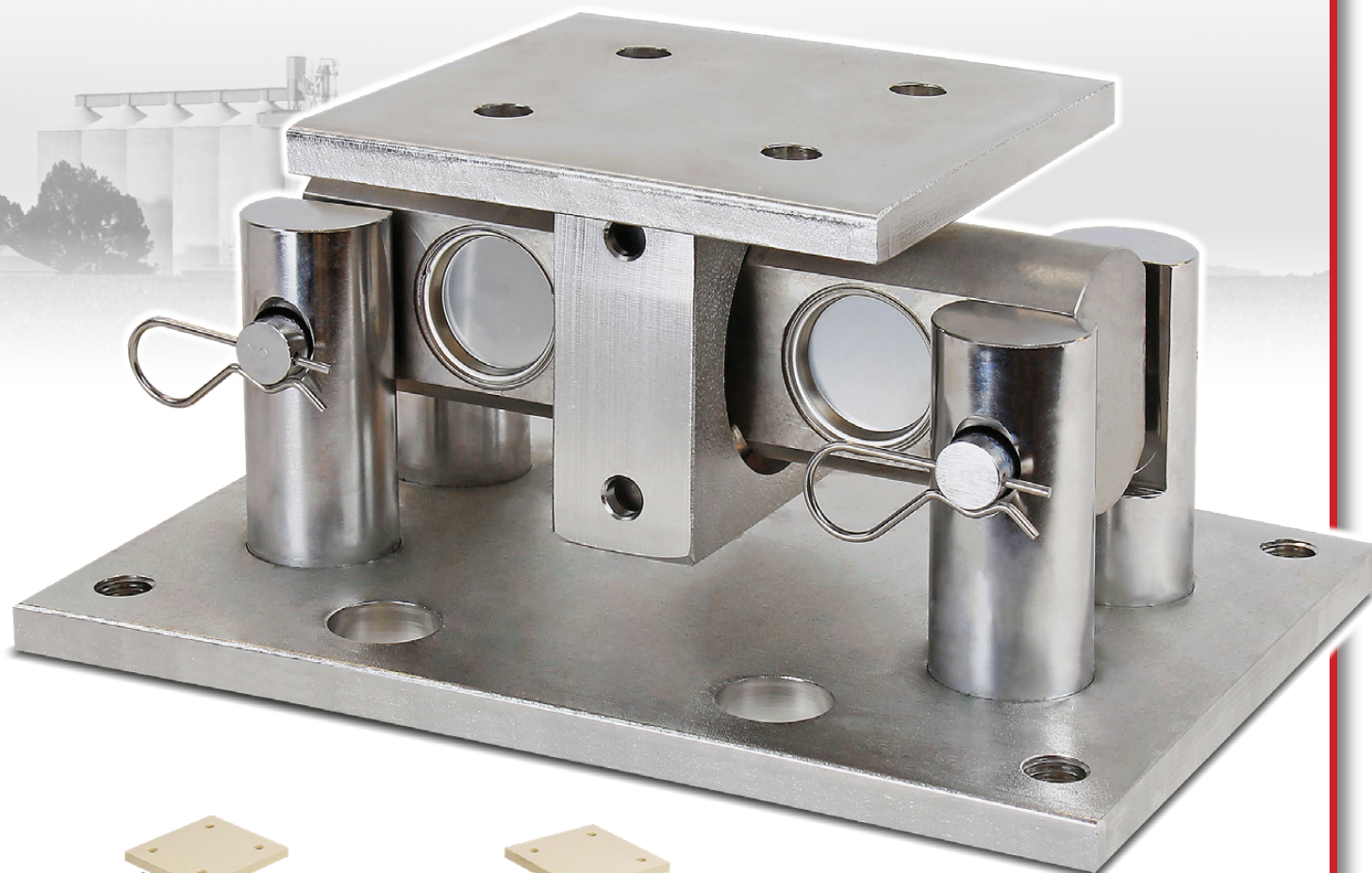


**CenterPoint****DB-SP****HEAVY-CAPACITY DOUBLE-ENDED
SHEAR BEAM LOAD CELL STANDS**

- NTEP, OIML, and VCAP Certified Load Cells
- Standard System Capacities Ranging from 60,000 lb (27,000 kg) up to 300,000 lb (136,000 kg)
- Superior Serviceability: Fast and Simple Load Cell Replacement
- Environmentally-Sealed Stainless Steel Load Cells

SUPERIOR PERFORMANCE IN A WIDE RANGE OF PROCESS CONTROL AND VESSEL WEIGHING APPLICATIONS



HEAVY-CAPACITY WEIGHING ACCURACY AND RUGGED DURABILITY

- Tanks
- Bins
- Hoppers
- Silos
- Mixers

Cardinal Scale's DB-SP load cell mounting kits utilize the time-tested and reliably-proven model DB double-ended stainless steel load cells that feature a center load design. The stands are available in either stainless steel or mild steel powder-painted industrial tan and they bolt directly to the floor and tank. The DB-SP's environmentally-sealed load cells are NTEP, OIML, and VCAP certified for quality and accuracy.

The bolt-in-place mounting assembly with articulating top plate makes them ideal for indoor or outdoor weighing applications. Available in three or four-legged mounting assemblies, the DB-SP CenterPoint load cell kits are perfect for mixing, blending, batching, inventory control, and general weighing. Combine them with one of Cardinal's state-of-the-art 200 series weight indicators for a complete digital weighing system.

PRECISION ENGINEERING AND MANUFACTURING

Cardinal Scale's load cell production facility is VCAP and ISO certified for quality and precision standards offering dependable accuracy for each and every load cell manufactured.



The DB-SP stands are engineered to for superior serviceability and easy load cell replacement by simply applying a jack under the stand, removing the cotter pins, and swapping out the load cell.

- Center Load Design
- Bolts Directly to Floor and Tank
- Low-Profile Load Cell Stands
- Easy-to-Install, Bolt-Down Design
- Direct Replacement for Competitive Load Cell Stands

DIGITAL WEIGHT INDICATORS AVAILABLE

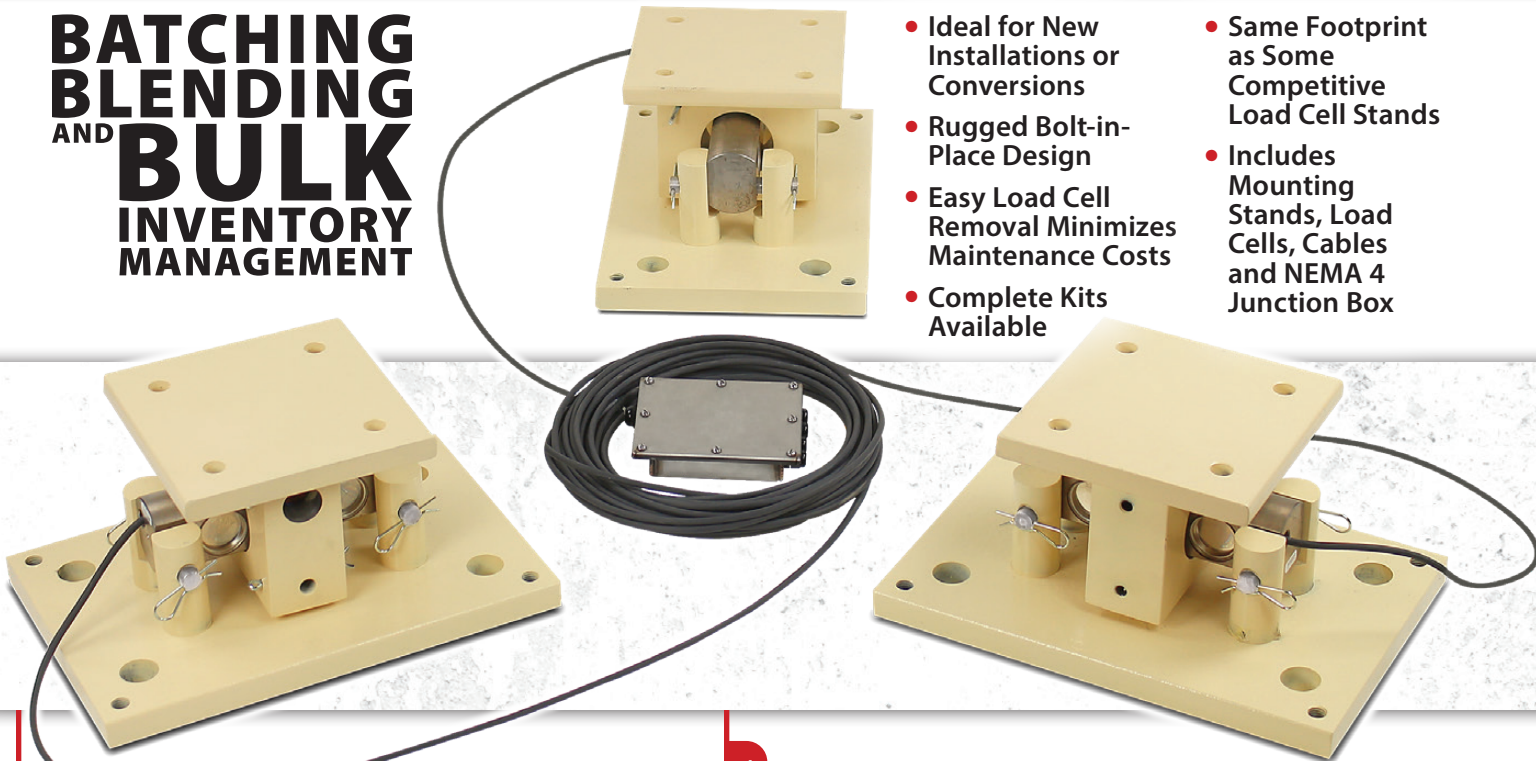


Choose from a wide selection of Cardinal Scale's digital weight indicators to complete your vessel weighing application.

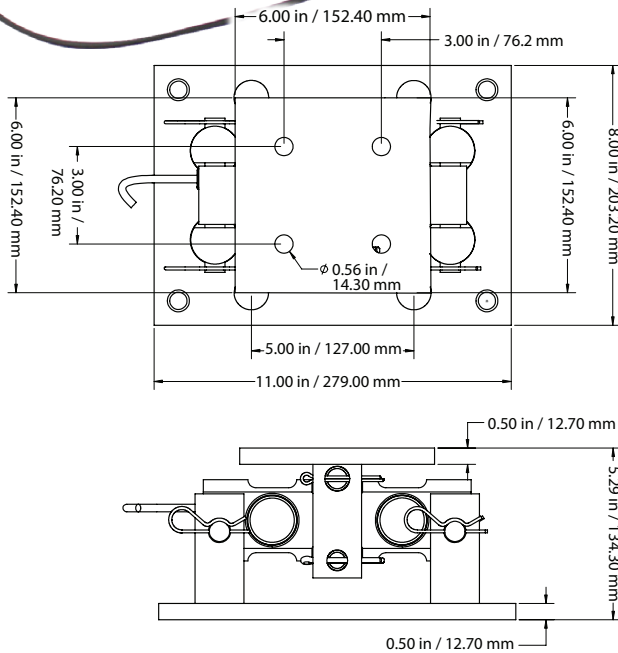
TIME-TESTED AND PROVEN DB STAINLESS STEEL LOAD CELLS

**BATCHING
BLENDING
AND
BULK
INVENTORY
MANAGEMENT**

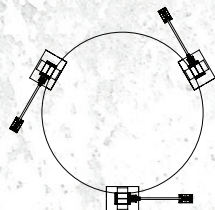
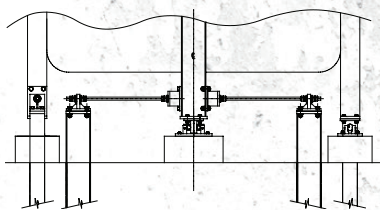
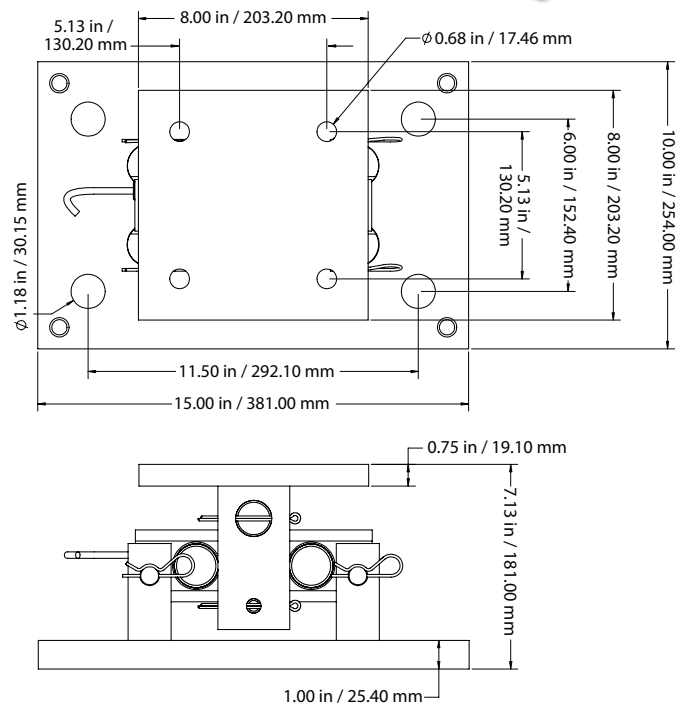
- Ideal for New Installations or Conversions
- Rugged Bolt-in-Place Design
- Easy Load Cell Removal Minimizes Maintenance Costs
- Complete Kits Available
- Same Footprint as Some Competitive Load Cell Stands
- Includes Mounting Stands, Load Cells, Cables and NEMA 4 Junction Box



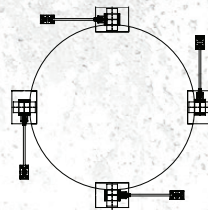
DB-20000SP / DB-20000SPS



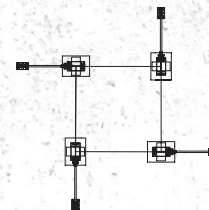
DB-30000SP & SPS / DB-50000SP & SPS / DB-75000SP-4 & SPS-4



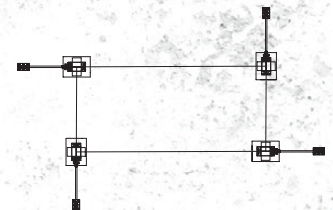
3-Mount Circular



4-Mount Circular



4-Mount Square



4-Mount Rectangular



CenterPoint

DB-SP

CENTERPOINT DOUBLE-ENDED SHEAR BEAM LOAD CELL KITS

HEAVY-CAPACITY VESSEL WEIGHING

Load Cell Model	DB series
Load Cell Type	Stainless steel, center-load, double-ended shear beam load cells
Load Cell Protection Class	IP68
Load Cell Capacities	20,000 lb (9,070 kg) up to 75,000 lb (34,000 kg)
Load Cell Cable	30 ft / 9 m
Stand Type	Bolt-in-place design
Stand Construction	Stainless steel or powder-painted mild steel
Junction Box Type	Stainless steel 4-cell trim box
Junction Box Cable Length to Indicator	30 ft / 9 m with 9-pin D connector
Included	Each kit consists of three or four stand assemblies, load cells, load cell stands, stainless steel NEMA 4 junction box, and load cell cable
System Capacities	60,000 lb (27,000 kg) up to 300,000 lb (136,000 kg)
Indicators	A wide selection of digital weight indicators are also available from Cardinal Scale
Weighing Applications	Tanks, hoppers, mixers, silos, and bins

Kits consist of 3 load cell stand assemblies, 3 stainless steel DB load cells with 30 ft. load cell cable, 3 mild steel stands and 1 stainless steel, NEMA 4 junction box. Stainless steel systems have stainless steel stands.

		Model	Load Cell Capacity	System Capacity	Shipping Weight
3 CELL SYSTEMS	MILD STEEL	DB-20000SP-3	20,000 lb / 9,070 kg	60,000 lb / 27,215 kg	94 lb
		DB-30000SP-3	30,000 lb / 13,605 kg	90,000 lb / 40,825 kg	343 lb
		DB-50000SP-3	50,000 lb / 22,700 kg	150,000 lb / 68,040 kg	343 lb
		DB-75000SP-3	75,000 lb / 34,000 kg	225,000 lb / 100,000 kg	343 lb
	STAINLESS STEEL	DB-20000SPS-3	20,000 lb / 9,070 kg	60,000 lb / 27,215 kg	94 lb
		DB-30000SPS-3	30,000 lb / 13,605 kg	90,000 lb / 40,825 kg	343 lb
DB-50000SPS-3		50,000 lb / 22,700 kg	150,000 lb / 68,040 kg	343 lb	
DB-75000SPS-3		75,000 lb / 34,000 kg	225,000 lb / 100,000 kg	343 lb	

Kits consist of 4 load cell stand assemblies, 4 stainless steel DB load cells with 30 ft. load cell cable, 4 mild steel stands and 1 stainless steel, NEMA 4 junction box. Stainless steel systems have stainless steel stands.

		Model	Load Cell Capacity	System Capacity	Shipping Weight
4 CELL SYSTEMS	MILD STEEL	DB-20000SP-4	20,000 lb / 9,070 kg	80,000 lb / 36,280 kg	124 lb
		DB-30000SP-4	30,000 lb / 13,605 kg	120,000 lb / 54,420 kg	456 lb
		DB-50000SP-4	50,000 lb / 22,700 kg	200,000 lb / 90,800 kg	456 lb
		DB-75000SP-4	75,000 lb / 34,000 kg	300,000 lb / 136,000 kg	456 lb
	STAINLESS STEEL	DB-20000SPS-4	20,000 lb / 9,070 kg	80,000 lb / 36,280 kg	124 lb
		DB-30000SPS-4	30,000 lb / 13,605 kg	120,000 lb / 54,420 kg	456 lb
		DB-50000SPS-4	50,000 lb / 22,700 kg	200,000 lb / 90,800 kg	456 lb
		DB-75000SPS-4	75,000 lb / 34,000 kg	300,000 lb / 136,000 kg	456 lb

All systems need to be safety-checked or chained to prevent failure. A qualified engineer should be consulted that has determined the vessel to be used is structurally sound and capable of being supported by three or four points when filled to capacity.



Cardinal Scale reserves the right to improve, enhance, or modify features and specifications without prior notice.

Cardinal
 Cardinal Scale Manufacturing Co.
 102 E. Daugherty, Webb City, MO 64870 USA
 Ph: 417-673-4631 or 800-441-4237 • Fax: 417-673-2153
www.CardinalScale.com

SOLD BY: