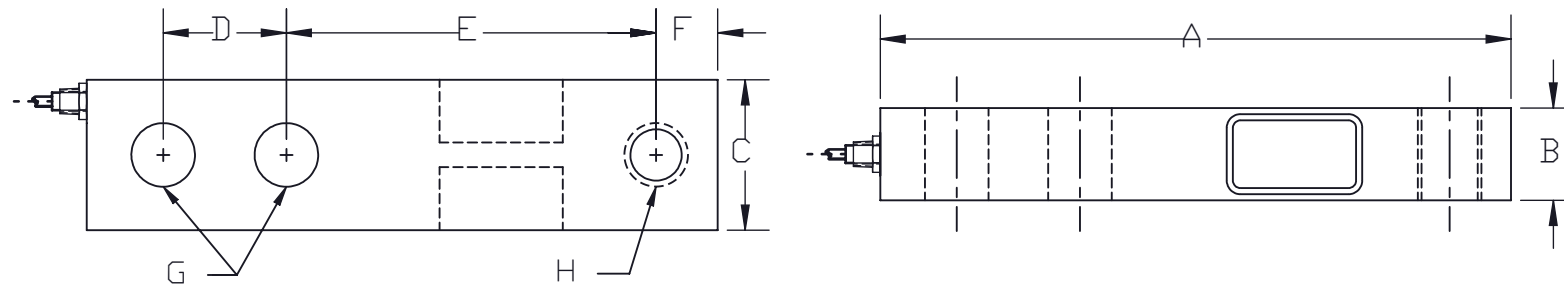


| REVISIONS | | | | |
|-----------|------|----------------------------------|----------|----------|
| ZONE | REV. | DESCRIPTION | DATE | APPROVED |
| | C | RATED OUTPUT WAS: 3.00mV/V ±0.1% | 08/14/14 | JSP |

PERFORMANCE SPECIFICATIONS:

1. CAPACITIES: 1K & 2.5K LB
2. RATED OUTPUT: 3.00 mV/V ±0.25%
3. SAFE OVERLOAD: 150% FS
4. EXCITATION VOLTAGE: 10-20V AC/DC
5. INPUT RESISTANCE: 385 ±10 OHMS
6. OUTPUT RESISTANCE: 350 ±3 OHMS
7. ZERO BALANCE: ±1.00% FS
8. SEAL TYPE: ENVIRONMENTALLY SEALED, IP67
9. NON-LINEARITY: ±0.03% FS
10. HYSTERESIS: ±0.02% FS
11. REAPEATABLITY: ±0.01% FS
12. CREEP: ±0.02% FS
13. NTEP RATED
14. CLASS 111 5,000 DIVISION, MULTIPLE CELL
15. COMPENSATED TEMPERATURE RANGE: -10°C - +40°C
16. TEMPERATURE EFFECT ON ZERO: ±0.0027%FS/°C
17. TEMPERATURE EFFECT ON OUTPUT: ±0.0015%FS/°C
18. INSULATION RESISTANCE: >5000 MEGOHMS
19. LOAD CELL CABLE: 4 CONDUCTOR, 20 FT
20. LOAD CELL WIRING:
 - GREEN +EXC
 - BLACK -EXC
 - WHITE +SIG
 - RED -SIG
 - BRAID/YELLOW: SHEILD



| RATED CAPACITY | DIMENSIONS | | | | | | | |
|----------------|------------|------|------|------|------|------|------|-----------|
| | A | B | C | D | E | F | G | H |
| 1K-2.5K | 5.12 | 0.75 | 1.22 | 1.00 | 3.00 | 0.50 | 0.51 | 1/2-20UNF |

21. FM APPROVED

"DO NOT ALTER WITHOUT AGENCY NOTIFICATION"

COTI GLOBAL SENSORS, INC.

**CG-23-LP SINGLE ENDED BEAM
NTEP LOAD CELL**

| | | | | | | | | | | | | | | | | | |
|---|---|--|---------------------|------|---|------------------|------|------------------|------|------|---|--------------|---|----------------|--|--|--------------|
| <p>THIS DRAWING USES THIRD ANGLE PROJECTION</p> | <p>THIS DOCUMENT CONTAINS PROPRIETARY INFORMATION AND SUCH INFORMATION MAY NOT BE REPRODUCED OR DISCLOSED FOR ANY PURPOSE OR USED TO PRODUCE THE ARTICLE OR SUBJECT WITHOUT WRITTEN PERMISSION FROM COTI GLOBAL SENSORS, INC.</p> | <p>TOLERANCES UNLESS OTHERWISE SPECIFIED .XX±.01 .XXX±.005 FRACTIONS±1/16" ANGLES: ±1/2"</p> | APPROVALS | DATE | <table border="1"> <tr> <td>SCALE</td> <td>SIZE</td> <td>PART/DRAWING NO.</td> <td>REV.</td> </tr> <tr> <td>NONE</td> <td>B</td> <td>DOD-CG-23-LP</td> <td>C</td> </tr> <tr> <td colspan="3">MODEL CG-23-LP</td> <td>SHEET 1 OF 1</td> </tr> </table> | SCALE | SIZE | PART/DRAWING NO. | REV. | NONE | B | DOD-CG-23-LP | C | MODEL CG-23-LP | | | SHEET 1 OF 1 |
| | | | SCALE | SIZE | | PART/DRAWING NO. | REV. | | | | | | | | | | |
| | | | NONE | B | | DOD-CG-23-LP | C | | | | | | | | | | |
| | | | MODEL CG-23-LP | | | SHEET 1 OF 1 | | | | | | | | | | | |
| DRAWN: MTSI | 10/01/08 | | | | | | | | | | | | | | | | |
| CHECKED: MB | 10/01/08 | | | | | | | | | | | | | | | | |
| ENGINEER: AA | 10/01/08 | | | | | | | | | | | | | | | | |
| APPROVED: AA | 10/01/08 | | | | | | | | | | | | | | | | |
| MATERIAL | | | ALLOY STEEL, PLATED | | | | | | | | | | | | | | |