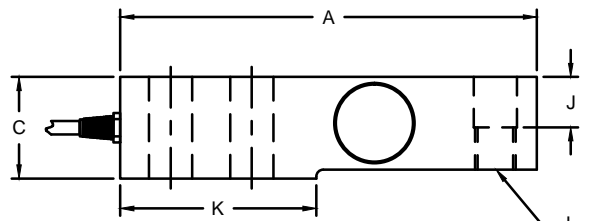
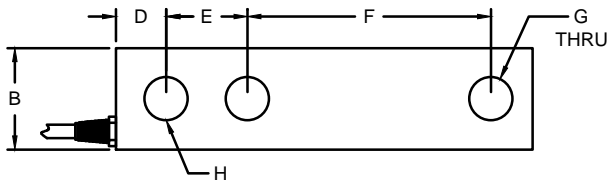
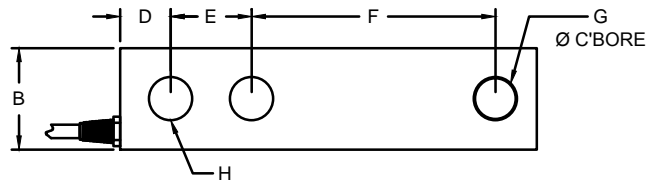
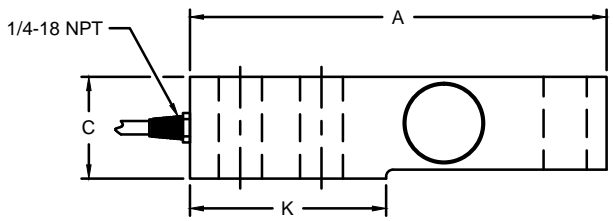


REVISIONS							
ZONE	LTR.	DESCRIPTION	DATE	ECN	BY	CKD	APVD
-	E	REDRAWN FOR LABELING CONSISTENCY	01/02/16	2016-15	TB	AB	AA

- PERFORMANCE SPECIFICATIONS:**
1. CAPACITIES: 1K, 1.5K, 2K, 2.5K, 4K, 5KSE, 5KLE, 10K.
  2. RATED OUTPUT: 2.00 mV/V  $\pm$ 0.25%.
  3. SAFE OVERLOAD: 150% FS.
  4. EXCITATION VOLTAGE: 10V AC/DC (15V MAX).
  5. INPUT RESISTANCE: 385  $\pm$ 10 $\Omega$ .
  6. OUTPUT RESISTANCE: 350  $\pm$ 3 $\Omega$ .
  7. ZERO BALANCE:  $\pm$ 1.00% FS.
  8. SEAL TYPE: WELDED-SEAL IP67.
  9. NON-LINEARITY:  $\pm$ 0.03% FS.
  10. HYSTERESIS:  $\pm$ 0.02% FS.
  11. REPEATABILITY:  $\pm$ 0.01% FS.
  12. CREEP:  $\pm$ 0.02% FS IN 30 MINUTES.
  13. NTEP RATED.
  14. CLASS III, 5,000 DIVISION, MULTIPLE CELL.
  15. COMPENSATED TEMPERATURE RANGE: -10°C TO +40°C.
  16. TEMPERATURE EFFECT ZERO:  $\pm$ 0.0027% FS/°C.
  17. TEMPERATURE EFFECT ON OUTPUT:  $\pm$ 0.0015% FS/°C.
  18. INSULATION RESISTANCE: 5000 MEGOHMS.
  19. LOAD CELL CABLE: 4-24AWG,  $\varnothing$ 5.6MM, C20-PVC OR T20-TEFLON, 20FT.
  20. LOAD CELL WIRING:  
GRN (+EXC)  
BLK (-EXC)  
WHT (+SIG)  
RED (-SIG)  
BRAID/YELLOW: SHIELD
  21. FM APPROVED.



CG-23-SSW THREADED LOAD HOLE



CG-23-SSW-1 NON-THREADED LOAD HOLE

RATED CAPACITY	DIMENSIONS										
	A	B	C	D	E	F	G	H	J	K	L
1K - 5KSE	5.12	1.25	1.25	0.62	1.00	3.00	0.50	0.53	0.62	2.25	1/2-20 UNF
5KLE - 10K	6.75	1.50	1.50	0.75	1.50	3.75	0.75	0.78	0.75	3.00	3/4-16 UNF

**DO NOT ALTER WITHOUT AGENCY NOTIFICATION**

**COTI GLOBAL SENSORS, INC.**

**CG - 23 - SSW - 02  
NTEP LOAD CELL**

<p>THIS DOCUMENT CONTAINS PROPRIETARY INFORMATION AND SUCH INFORMATION MAY NOT BE REPRODUCED OR DISCLOSED FOR ANY PURPOSE OR USED TO PRODUCE THE ARTICLE OR SUBJECT WITHOUT WRITTEN PERMISSION FROM COTI GLOBAL SENSORS, INC.</p>	<p>TOLERANCES UNLESS OTHERWISE SPECIFIED          .XX = <math>\pm</math>0.02"          .XXX = <math>\pm</math>0.005"          .XXXX = <math>\pm</math>0.0002"          FRACTIONS: <math>\pm</math>1/16"          ANGLES DEC: <math>\pm</math>18"</p>	APPROVALS	DATE	SCALE	SIZE	PART/DRAWING NO.	REV.	
		DRAWN: RLU	06/15/15	NONE	B	DOD-CG-23-SSW-02	E	
		CHECKED: AA	06/15/15					
		ENGINEER: JSP	06/15/15					
		APPROVED: AA	06/15/15					
FINISH: PASSIVATED		MODEL CG-23-SSW-02		SHEET		1 OF 1		