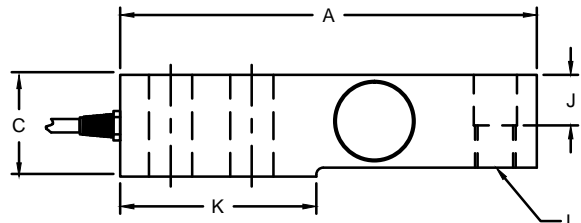
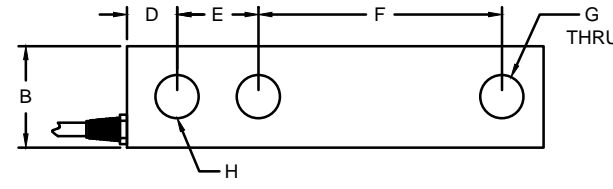
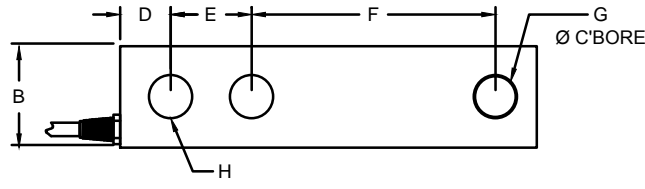


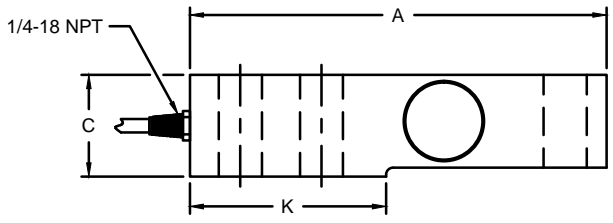
1. CG-23-SSW-03-C20 3mV/V 20' Common Cable
2. CG-23-SSW-13-C20 3mV/V Non-Threaded Hole 20' Common Cable
3. CG-23-SSW-03-T20 3mV/V 20' Teflon Cable
4. CG-23-SSW-02-C20 2mV/V 20' Common Cable
5. CG-23-SSW-12-C20 2mV/V Non-Threaded Hole 20' Common Cable
6. CG-23-SSW-02-T20 2mV/V 20' Teflon Cable

ZONE		LTR.		DESCRIPTION		DATE	ECN	BY	CKD	APVD
-	C	REDRAWN FOR LABELING CONSISTENCY		08/02/16	2016-83	AT	AB	AA		

- PERFORMANCE SPECIFICATIONS:**
1. CAPACITIES: 1K, 1.5K, 2K, 2.5K, 4K, 5KSE, 5KLE, 10K.
 2. RATED OUTPUT: 2.00 or 3.00 mV/V $\pm 0.1\%$.
 3. SAFE OVERLOAD: 150% FS.
 4. EXCITATION VOLTAGE: 10V AC/DC (15V MAX).
 5. INPUT RESISTANCE: $385 \pm 10\Omega$.
 6. OUTPUT RESISTANCE: $350 \pm 3\Omega$.
 7. ZERO BALANCE: $\pm 1.00\%$ FS.
 8. SEAL TYPE: WELDED-SEAL IP67.
 9. NON-LINEARITY: $\pm 0.03\%$ FS.
 10. HYSTERESIS: $\pm 0.02\%$ FS.
 11. REPEATABILITY: $\pm 0.01\%$ FS.
 12. CREEP: $\pm 0.02\%$ FS IN 30 MINUTES.
 13. NTEP RATED.
 14. CLASS III, 5,000 DIVISION, MULTIPLE CELL.
 15. COMPENSATED TEMPERATURE RANGE: -10°C TO $+40^{\circ}\text{C}$.
 16. TEMPERATURE EFFECTON ZERO: $\pm 0.0027\%$ FS/ $^{\circ}\text{C}$.
 17. TEMPERATURE EFFECT ON OUTPUT: $\pm 0.0015\%$ FS/ $^{\circ}\text{C}$.
 18. INSULATION RESISTANCE: 5000 MEGOHMS.
 19. LOAD CELL CABLE: 4-24AWG, $\varnothing 5.6\text{MM}$, C20-PVC OR T20-TEFLON, 20FT.
 20. LOAD CELL WIRING:
 - GRN (+EXC)
 - BLK (-EXC)
 - WHT (+SIG)
 - RED (-SIG)
 - BRAID/YELLOW: SHIELD
 21. FM APPROVED.



CG-23-SSW THREADED LOAD HOLE



CG-23-SSW-1 NON-THREADED LOAD HOLE

RATED CAPACITY	DIMENSIONS										
	A	B	C	D	E	F	G	H	J	K	L
1K - 5KSE	5.12	1.25	1.25	0.62	1.00	3.00	0.50	0.53	0.62	2.25	1/2-20 UNF
5KLE - 10K	6.75	1.50	1.50	0.75	1.50	3.75	0.75	0.78	0.75	3.00	3/4-16 UNF

DO NOT ALTER WITHOUT AGENCY NOTIFICATION

COTI GLOBAL SENSORS, INC.

**CG - 23 - SSW - XX
NTEP LOAD CELL**

APPROVALS		DATE	SCALE	SIZE	PART/DRAWING NO.	REV.
DRAWN:	RLU	06/15/15	NONE	B	DOD-CG-23-SSW-XX	C
CHECKED:	AA	06/15/15				
ENGINEER:	JSP	06/15/15				
APPROVED:	AA	06/15/15				
MATERIAL:	STAINLESS STEEL					
FINISH:	PASSIVATED					
MODEL CG-23-SSW-02			SHEET 1 OF 1			



THIS DOCUMENT CONTAINS PROPRIETARY INFORMATION AND SUCH INFORMATION MAY NOT BE REPRODUCED OR DISCLOSED FOR ANY PURPOSE OR USED TO PRODUCE THE ARTICLE OR SUBJECT WITHOUT WRITTEN PERMISSION FROM COTI GLOBAL SENSORS, INC.

TOLERANCES UNLESS OTHERWISE SPECIFIED
 .XX = ± 0.02 "
 .XXX = ± 0.005 "
 .XXXX = ± 0.0002 "
 FRACTIONS: $\pm 1/16$ "
 ANGLES DEC: $\pm 1/8$ "