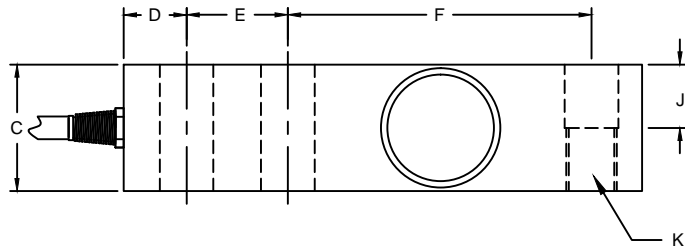
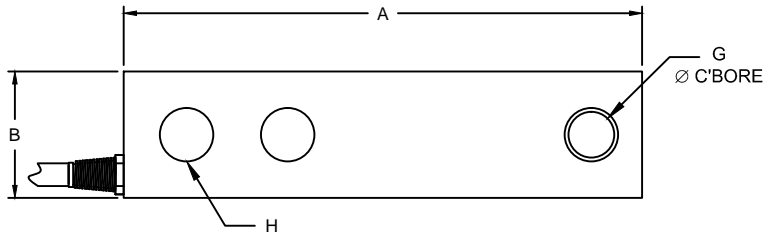


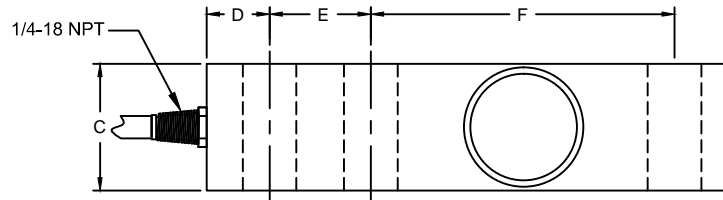
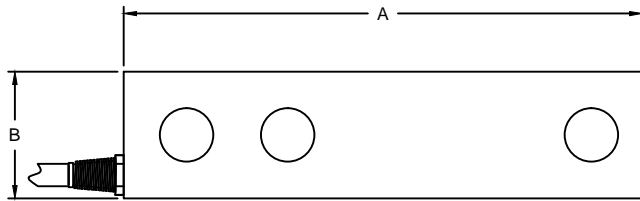
REVISIONS							
ZONE	LTR.	DESCRIPTION	DATE	ECN	BY	CKD	APVD
-	E	ADDED NEW TITLE BLOCK	11/7/18	2018-10	TB	AA	AA



**CG-23 THREADED LOAD HOLE**

**PERFORMANCE SPECIFICATIONS:**

- CAPACITIES: \* NON NTEP  
\*100LB, 250LB, 500LB, 750LB, 1K, 1.5K, 2K, 2.5K, 4K, 5KSE, 5KLE, 10K, 15K, 20K
- RATED OUTPUT: 3.00 mV/V  $\pm 0.25\%$ .
- SAFE OVERLOAD: 150% FS.
- EXCITATION VOLTAGE: 10V AC/DC ( 15V MAX ) .
- INPUT RESISTANCE: 385  $\pm 10\Omega$ .
- OUTPUT RESISTANCE: 350  $\pm 3\Omega$ .
- ZERO BALANCE:  $\pm 1.00\%$  FS.
- SEAL TYPE: ENVIRONMENTALLY SEALED IP67
- NON-LINEARITY:  $\pm 0.03\%$  FS.
- HYSTERESIS:  $\pm 0.02\%$  FS.
- REPEATABILITY:  $\pm 0.01\%$  FS.
- CREEP:  $\pm 0.02\%$  FS IN 30 MINUTES.
- NTEP RATED
- CLASS III, 10,000 DIVISION, MULTIPLE CELL.
- COMPENSATED TEMPERATURE RANGE:  $-10^{\circ}\text{C}$  TO  $+40^{\circ}\text{C}$
- TEMPERATURE EFFECT ZERO:  $\pm 0.0027\%$  FS/ $^{\circ}\text{C}$
- TEMPERATURE EFFECT ON OUTPUT:  $\pm 0.0015\%$  FS/ $^{\circ}\text{C}$
- INSULATION RESISTANCE: 5000 MEGOHMS.
- LOAD CELL CABLE: 4-24AWG,  $\varnothing 5.6\text{MM}$ , PVC, 20FT.
- LOAD CELL WIRING:  
GRN (+EXC)  
BLK (-EXC)  
WHT (+SIG)  
RED (-SIG)  
BRAID/YELLOW: SHIELD
- FM APPROVED



**CG-23-1 NON-THREADED LOAD HOLE**

RATED CAPACITY	DIMENSIONS									
	A	B	C	D	E	F	G	H	J	K
100LB-750LB	5.12	1.25	1.25	0.62	1.00	3.00	0.53	0.53	0.62	1/2-20 UNF
1K-5KSE	5.12	1.25	1.25	0.62	1.00	3.00	0.53	0.53	0.62	1/2-20 UNF
5KLE-10K	6.75	1.50	1.50	0.75	1.50	3.75	0.78	0.78	0.75	3/4-16 UNF
15K-20K	8.88	2.00	2.00	1.00	2.00	4.88	1.03	1.03	1.00	1-14 UNF



DO NOT ALTER WITHOUT AGENCY NOTIFICATION

**Coti Global Sensors**  
MANUFACTURING

Weighing Products Worldwide

	THIS DRAWING USES THIRD ANGLE PROJECTION	APPROVALS	DATE
		DRAWN: TB	11/7/18
	THIS DRAWING USES THIRD ANGLE PROJECTION	CHECKED: AA	11/7/18
		ENGINEER: TB	11/7/18
	THIS DRAWING USES THIRD ANGLE PROJECTION	APPROVED: AA	11/7/18
		MATERIAL: ALLOY STEEL	
FINISH: NICKEL PLATED			

SCALE	SIZE	PART/DRAWING NO.	REV.
NONE	B	DOD-CG-23	E
MODEL: CG-23		SHEET 1 OF 1	

THIS DOCUMENT CONTAINS PROPRIETARY INFORMATION AND SUCH INFORMATION MAY NOT BE REPRODUCED OR DISCLOSED FOR ANY PURPOSE OR USED TO PRODUCE THE ARTICLE OR SUBJECT WITHOUT WRITTEN PERMISSION FROM COTI GLOBAL SENSORS, INC.

TOLERANCES UNLESS OTHERWISE SPECIFIED:  
 .XX" =  $\pm 0.02$ "  
 .XXX" =  $\pm 0.005$ "  
 .XXXX" =  $\pm 0.0002$ "  
 FRACTIONS  $\pm 1/16$ "  
 ANGLES DEG.  $\pm 1/8$