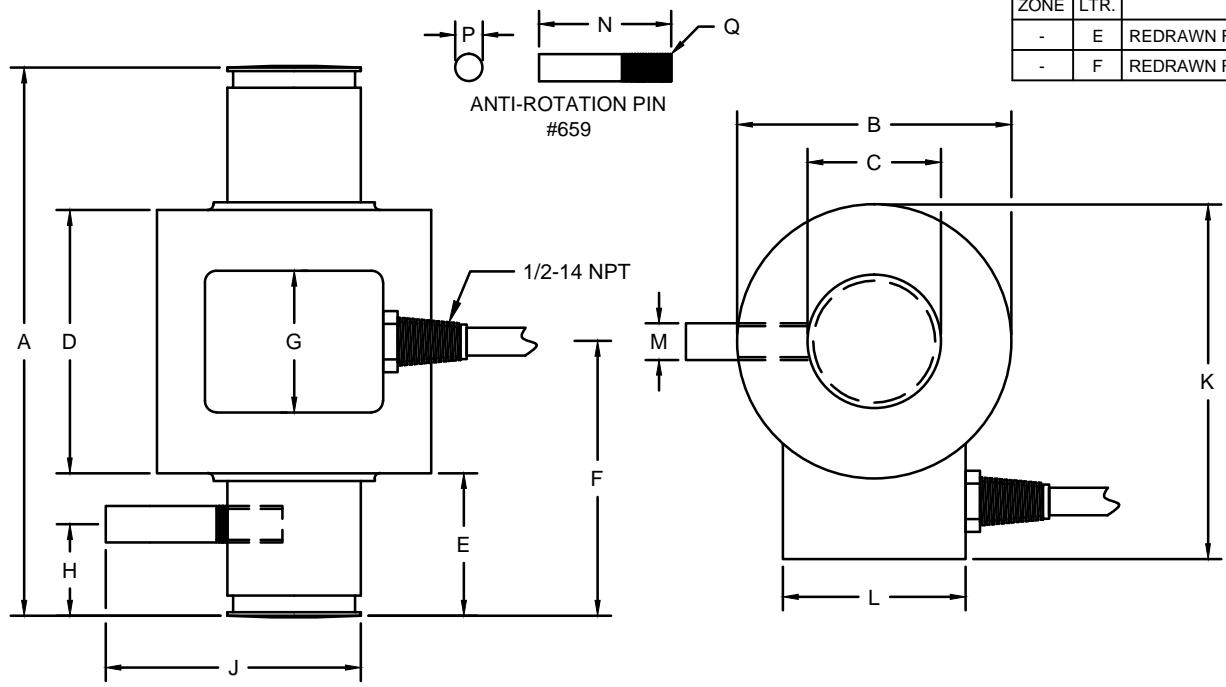


REVISIONS							
ZONE	LTR.	DESCRIPTION	DATE	ECN	BY	CKD	APVD
-	E	REDRAWN FOR CATALOG CLARITY	03/27/15	2015-11	RLU	JSP	AA
-	F	REDRAWN FOR LABELING CONSISTENCY	12/15/15	2016-57	TB	AB	AA



- PERFORMANCE SPECIFICATIONS:**
- CAPACITIES: 50KSE, 50KLE (LB).
 - RATED OUTPUT: 1.80 mV/V $\pm 0.25\%$.
 - SAFE OVERLOAD: 150% FS.
 - EXCITATION VOLTAGE: 10V AC/DC (15V MAX).
 - INPUT RESISTANCE: 1080 $\pm 10\Omega$.
 - OUTPUT RESISTANCE: 1000 $\pm 5\Omega$.
 - ZERO BALANCE: $\pm 1.00\%$ FS.
 - SEAL TYPE: HERMETICALLY SEALED IP67.
 - NON-LINEARITY: $\pm 0.03\%$ FS.
 - HYSTERESIS: $\pm 0.02\%$ FS.
 - REPEATABILITY: $\pm 0.01\%$ FS.
 - CREEP: $\pm 0.02\%$ FS (IN 30 MINUTES).
 - NTEP RATED.
 - CLASS IIIIL, 10,000 DIVISION, MULTIPLE CELL.
 - COMPENSATED TEMPERATURE RANGE: 0°C - 30°C.
 - TEMPERATURE EFFECT ON ZERO: $\pm 0.0027\%$ FS/°C.
 - TEMPERATURE EFFECT ON OUTPUT: $\pm 0.0015\%$ FS/°C.
 - INSULATION RESISTANCE: 5000 MEGOHMS.
 - LOAD CELL CABLE: 4-22AWG, $\varnothing 6.8\text{MM}$, BRAIDED, 50FT.
 - LOAD CELL WIRING:
GRN (+EXC)
BLK (-EXC)
WHT (+SIG)
RED (-SIG)
BRAID/YELLOW: SHIELD
 - FM APPROVED.

RATED CAPACITY	DIMENSIONS														
	A	B	C	D	E	F	G	H	J	K	L	M	N	P	Q
50KSE	6.00	3.00	1.46	2.88	1.56	3.00	1.62	1.00	2.88	3.88	2.00	0.38	-	-	-
50KLE	7.56	3.00	1.46	2.88	2.34	3.78	1.62	1.00	2.88	3.88	2.00	0.38	-	-	-
659													1.89	0.38	M10x1

DO NOT ALTER WITHOUT AGENCY NOTIFICATION

COTI GLOBAL SENSORS, INC.

<p>THIS DRAWING USES THIRD ANGLE PROJECTION</p> <p>THIS DOCUMENT CONTAINS PROPRIETARY INFORMATION AND SUCH INFORMATION MAY NOT BE REPRODUCED OR DISCLOSED FOR ANY PURPOSE OR USED TO PRODUCE THE ARTICLE OR SUBJECT WITHOUT WRITTEN PERMISSION FROM COTI GLOBAL SENSORS, INC.</p>	<p>TOLERANCES UNLESS OTHERWISE SPECIFIED</p> <p>.XX = ± 0.02"</p> <p>.XXX = ± 0.005"</p> <p>.XXXX = ± 0.0002"</p> <p>FRACTIONS: $\pm 1/16$"</p> <p>ANGLES DEG. $\pm 1/8$</p>	APPROVALS	DATE	<p>SCALE: NONE</p> <p>SIZE: B</p> <p>PART/DRAWING NO. DOD-CG-26S1</p> <p>MODEL: CG-26S1</p> <p>SHEET: 1 OF 1</p>	<p>REV. F</p>
		DRAWN: RLU	03/27/15		
		CHECKED: AA	03/30/15		
		ENGINEER: JSP	03/30/15		
		APPROVED: AA	03/30/15		
MATERIAL: STAINLESS STEEL					
FINISH: PASSIVATED					