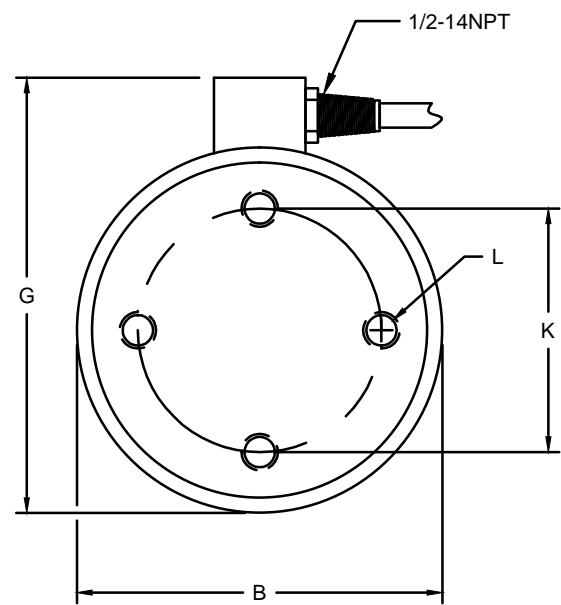
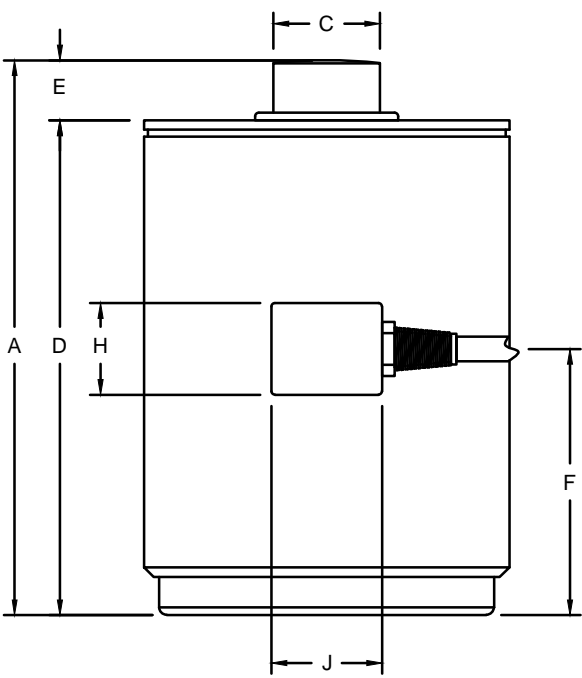


REVISIONS							
ZONE	LTR.	DESCRIPTION	DATE	ECN	BY	CKD	APVD
-	B	REDRAWN FOR LABELING CONSISTENCY	04/21/15		RU	AB	AA
-	C	CORRECTED TYPOS IN D AND G DIMENSIONS	6/2/16	2016-82	TB	AB	AA



PERFORMANCE SPECIFICATIONS:

1. CAPACITIES: 20K, 50K, 100K, 200K (LB).
2. RATED OUTPUT: 2.00 mV/V $\pm 0.1\%$.
3. SAFE OVERLOAD: 150% FS.
4. EXCITATION VOLTAGE: 10V AC/DC (15V MAX).
5. INPUT RESISTANCE: 1080 $\pm 10\Omega$.
6. OUTPUT RESISTANCE: 1000 $\pm 5\Omega$.
7. ZERO BALANCE: $\pm 1.00\%$ FS.
8. SEAL TYPE: HERMETICALLY SEALED IP67.
9. NON-LINEARITY: $\pm 0.05\%$ FS.
10. HYSTERESIS: $\pm 0.03\%$ FS.
11. REPEATABILITY: $\pm 0.01\%$ FS.
12. CREEP: $\pm 0.02\%$ FS IN 30 MINUTES.
13. COMPENSATED TEMPERATURE RANGE: -10°C TO $+40^{\circ}\text{C}$.
14. TEMPERATURE EFFECT ON ZERO: $\pm 0.0027\%$ FS/ $^{\circ}\text{C}$.
15. TEMPERATURE EFFECT ON OUTPUT: $\pm 0.0015\%$ FS/ $^{\circ}\text{C}$.
16. INSULATION RESISTANCE: 5000 MEGOHMS.
17. LOAD CELL CABLE: 4-24AWG, $\varnothing 5.6\text{MM}$, PVC, 50FT.
18. LOAD CELL WIRING:
 - GRN (+EXC)
 - BLK (-EXC)
 - WHT (+SIG)
 - RED (-SIG)
 - YELLOW: SHIELD
19. FM APPROVED.

RATED CAPACITY	DIMENSIONS										
	A	B	C	D	E	F	G	H	J	K	L
20 - 50K	7.50	4.50	1.25	7.00	0.50	3.86	5.75	1.57	1.57	2.38	3/8-24UNFx0.63 DEEP
100K	9.13	6.00	1.75	8.25	0.71	4.48	7.00	1.57	1.57	4.00	1/2-20UNFx0.75 DEEP
200K	11.63	8.00	2.50	10.66	0.81	5.78	9.00	1.97	1.97	5.50	5/8-18UNFx1.00 DEEP

DO NOT ALTER WITHOUT AGENCY NOTIFICATION
COTI GLOBAL SENSORS, INC.

CG - 26S3-10
CANISTER LOAD CELL

THIS DRAWING USES THIRD ANGLE PROJECTION THIS DOCUMENT CONTAINS PROPRIETARY INFORMATION AND SUCH INFORMATION MAY NOT BE REPRODUCED OR DISCLOSED FOR ANY PURPOSE OR USED TO PRODUCE THE ARTICLE OR SUBJECT WITHOUT WRITTEN PERMISSION FROM COTI GLOBAL SENSORS, INC.		APPROVALS		DATE
		DRAWN: RLU		04/21/15
		CHECKED: AA		04/21/15
		ENGINEER: JSP		04/21/15
TOLERANCES UNLESS OTHERWISE SPECIFIED .XX = ± 0.02 " .XXX = ± 0.005 " .XXXX = ± 0.0002 " FRACTIONS: $\pm 1/16$ " ANGLES DEG: $\pm 1/8$ "		APPROVED: AA		04/21/15
		MATERIAL: STAINLESS STEEL		
		FINISH: PASSIVATED		
		SCALE: NONE	SIZE: B	PART/DRAWING NO: DOD-CG-26S3-10
		MODEL: CG-26S3		REV: C
		SHEET: 1 OF 1		