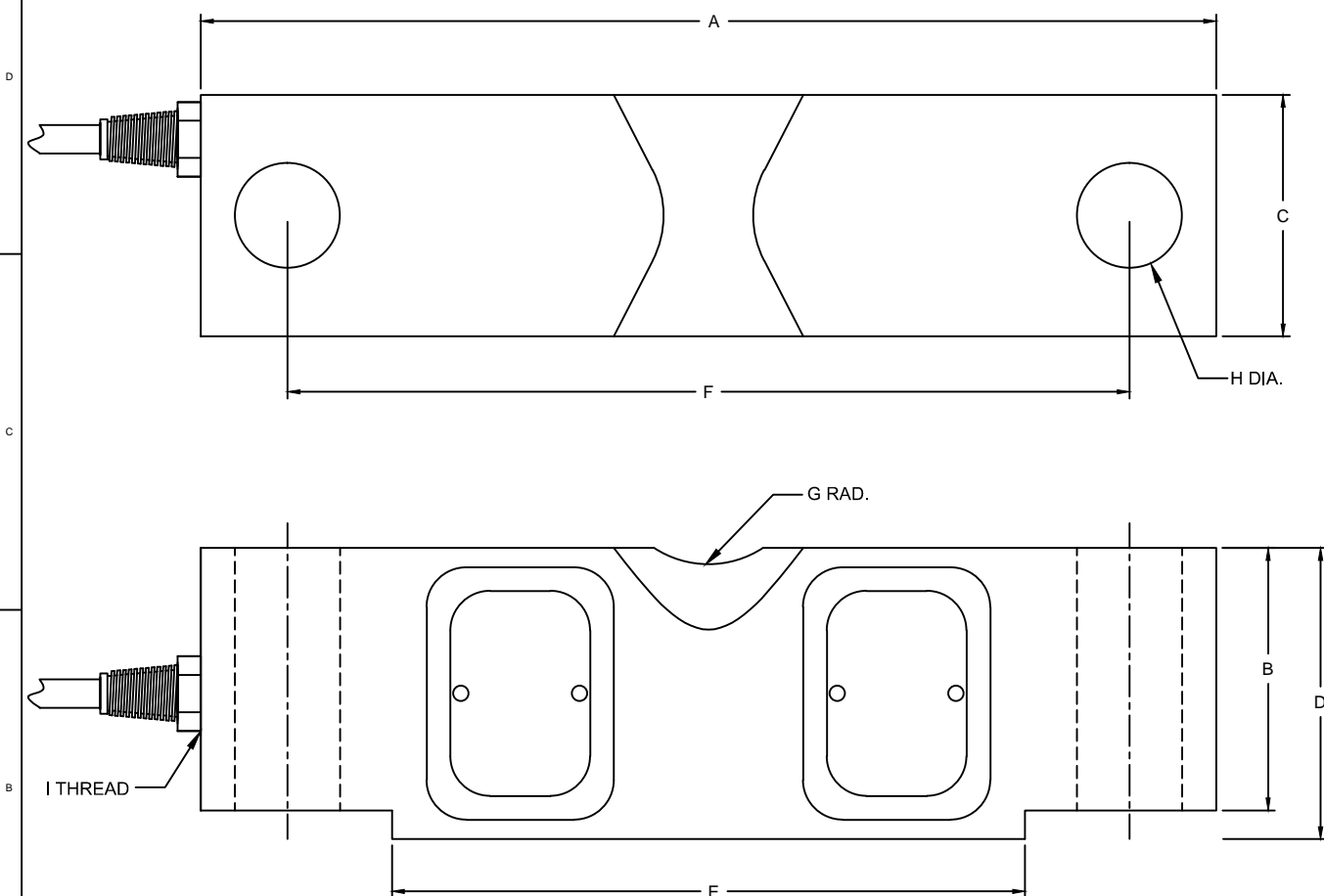
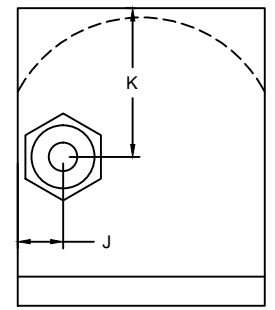


REVISIONS							
ZONE	LTR.	DESCRIPTION	DATE	ECN	BY	CKD	APVD
-	E	ADDED DIMENSIONS J&K	11/16/18	2018-11	TB	AA	AA



- PERFORMANCE SPECIFICATIONS:**
- CAPACITIES: * NON NTEP
*10K, *20K, 25K, 40K, 50KSE, 50K, 60K, 75K, 100K & 125K LB
 - RATED OUTPUT: 3.00 mV/V $\pm 0.25\%$.
 - SAFE OVERLOAD: 150% FS.
 - EXCITATION VOLTAGE: 10-20V AC/DC.
 - INPUT RESISTANCE: 700 $\pm 10\Omega$.
 - OUTPUT RESISTANCE: 700 $\pm 5\Omega$.
 - ZERO BALANCE: $\pm 1.00\%$ FS.
 - SEAL TYPE: ENVIRONMENTALLY SEALED IP67
 - NON-LINEARITY: $\pm 0.03\%$ FS.
 - HYSTERESIS: $\pm 0.02\%$ FS.
 - REPEATABILITY: $\pm 0.01\%$ FS.
 - CREEP: $\pm 0.02\%$ FS.
 - NTEP RATED
 - CLASS III, 10,000 DIVISION, MULTIPLE CELL.
 - COMPENSATED TEMPERATURE RANGE: -10°C TO +40°C.
 - TEMPERATURE EFFECT ZERO: $\pm 0.0027\%$ FS/°C
 - TEMPERATURE EFFECT ON OUTPUT: $\pm 0.0015\%$ FS/°C
 - INSULATION RESISTANCE: 5000 MEGOHMS.
 - LOAD CELL CABLE: 4 CONDUCTOR, 50FT BRAIDED SHIELD
 - LOAD CELL WIRING:
GRN (+EXC)
BLK (-EXC)
WHT (+SIG)
RED (-SIG)
BRAID/YELLOW: SHIELD
 - FM APPROVED



RATED CAPACITY	DIMENSIONS										
	A	B	C	D	E	F	G	H	I	J	K
10K-25K	7.75	1.70	1.69	1.94	5.00	6.50	0.75	0.68	1/4-18NPT	0.31	0.97
40K-50KSE	10.25	2.10	1.94	2.44	6.39	8.50	1.00	0.81	1/4-18NPT	0.34	1.22
50K-75K	10.25	2.65	2.44	2.94	6.39	8.50	1.00	1.06	1/2-14NPT	0.45	1.47
100K-125K	15.25	3.43	2.90	3.86	9.00	12.75	1.50	1.62	1/2-14NPT	0.43	1.93



<p>THIS DRAWING USES THIRD ANGLE PROJECTION</p>	<p>TOLERANCES UNLESS OTHERWISE SPECIFIED: .XX" = ± 0.02" .XXX" = ± 0.005" .XXXX" = ± 0.0002" FRACTIONS $\pm 1/16$" ANGLES DEG. $\pm 1/8$</p>	APPROVALS	DATE
		DRAWN: TB	11/16/18
		CHECKED: AA	11/16/18
		ENGINEER: TB	11/16/18
MATERIAL: ALLOY STEEL		APPROVED: AA	11/16/18

DO NOT ALTER WITHOUT AGENCY NOTIFICATION

Coti Global Sensors
MANUFACTURING

Weighing Products Worldwide

CG-58 DOUBLE ENDED BEAM NTEP LOAD CELL

SCALE: NONE	SIZE: B	PART/DRAWING NO.: DOD-CG-58	REV. E
MODEL: CG-58		SHEET 1 OF 1	