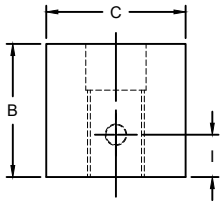
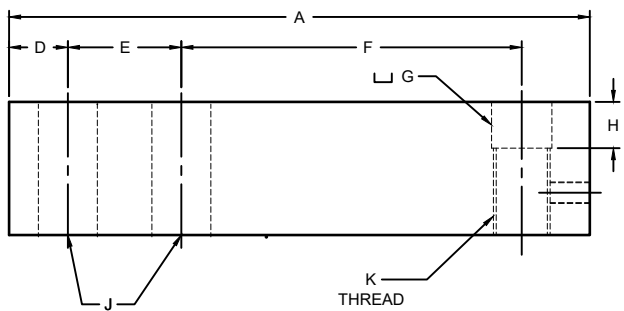


| REVISIONS | | | | | | | |
|-----------|------|--------------------------------------|------------|---------|----|-----|------|
| ZONE | LTR. | DESCRIPTION | DATE | ECN | BY | CKD | APVD |
| - | - | INITIAL RELEASE | 10/01/08 | - | - | - | - |
| - | - | EDIT DIMENSION TABLE | 09/09/09 | - | - | - | - |
| - | C | CHANGED RATED OUTPUT TO $\pm 0.25\%$ | 04/23/2021 | 2021-03 | GC | AT | AT |



- PERFORMANCE SPECIFICATIONS:**
- CAPACITIES: 1K, 2.5K, 4K, 5K, & 10K LB.
 - RATED OUTPUT: 2.00 mV/V $\pm 0.25\%$.
 - SAFE OVERLOAD: 150% FS.
 - EXCITATION VOLTAGE: 10V AC/DC (20V MAX).
 - INPUT RESISTANCE: 1080 $\pm 10\Omega$.
 - OUTPUT RESISTANCE: 1000 $\pm 5\Omega$.
 - ZERO BALANCE: $\pm 1.00\%$ FS.
 - SEAL TYPE: POTTED SEAL.
 - NON-LINEARITY: $\pm 0.03\%$ FS.
 - HYSTERESIS: $\pm 0.03\%$ FS.
 - REPEATABILITY: $\pm 0.01\%$ FS.
 - CREEP: $\pm 0.02\%$ FS
 - COMPENSATED TEMPERATURE RANGE: -10°C TO $+40^{\circ}\text{C}$.
 - TEMPERATURE EFFECT ON ZERO: $\pm 0.0027\%$ FS/ $^{\circ}\text{C}$.
 - TEMPERATURE EFFECT ON OUTPUT: $\pm 0.0015\%$ FS/ $^{\circ}\text{C}$.
 - INSULATION RESISTANCE: 5000 MEGOHMS.
 - LOAD CELL CABLE: 4 CONDUCTOR, 20FT.
 - LOAD CELL WIRING:
 - GRN (+EXC)
 - BLK (-EXC)
 - WHT (+SIG)
 - RED (-SIG)
 - YELLOW (SHIELD)
19. FM APPROVED.

| RATED CAPACITY | DIMENSIONS | | | | | | | | | | |
|----------------|------------|------|------|------|------|------|------|------|------|------|-----------|
| | A | B | C | D | E | F | G | H | I | J | K |
| 1.5K-2.5K | 9.00 | 1.13 | 1.25 | 0.62 | 1.75 | 6.00 | 0.69 | 0.50 | 0.25 | 0.53 | 5/8-18UNF |
| 5K | 10.00 | 1.44 | 1.50 | 0.75 | 2.00 | 6.25 | 0.94 | 0.50 | 0.50 | 0.78 | 7/8-14UNF |



DO NOT ALTER WITHOUT AGENCY NOTIFICATION

Coti Global Sensors
MANUFACTURING

Weighing Products Worldwide

| | | |
|---|---|---|
| <p>THIS DRAWING USES THIRD ANGLE PROJECTION</p> <p>THIS DOCUMENT CONTAINS PROPRIETARY INFORMATION AND SUCH INFORMATION MAY NOT BE REPRODUCED OR DISCLOSED FOR ANY PURPOSE OR USED TO PRODUCE THE ARTICLE OR SUBJECT WITHOUT WRITTEN PERMISSION FROM COTI GLOBAL SENSORS, INC.</p> | <p>APPROVALS</p> <p>DRAWN: TB 01/02/16</p> <p>CHECKED: AA 01/02/16</p> <p>ENGINEER: TB 01/02/16</p> <p>APPROVED: AA 01/02/16</p> | <p>DATE</p> <p>01/02/16</p> <p>01/02/16</p> <p>01/02/16</p> |
| | <p>TOLENCES UNLESS OTHERWISE SPECIFIED</p> <p>.XX= ± 0.02"</p> <p>.XXX= ± 0.005"</p> <p>.XXXX= ± 0.0002"</p> <p>FRACTIONS $\pm 1/16$"</p> <p>ANGLES DEC. $\pm 1/8$</p> | <p>MATERIAL:</p> <p>STAINLESS STEEL</p> |
| | <p>SCALE</p> <p>NONE</p> | <p>SIZE</p> <p>B</p> |
| | <p>PART/DRAWING NO.</p> <p>DOD-CG-BLF</p> | <p>REV.</p> <p>C</p> |
| | <p>MODEL CG-BLF</p> | <p>SHEET 1 OF 1</p> |

| | |
|------------------------------------|--------------|
| CG-BLF SINGLE ENDED BEAM LOAD CELL | |
| SCALE | REV. |
| NONE | C |
| MODEL CG-BLF | SHEET 1 OF 1 |