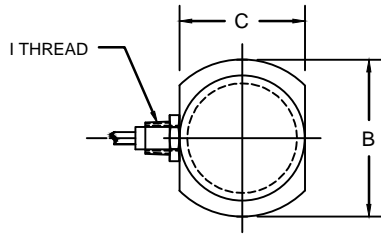
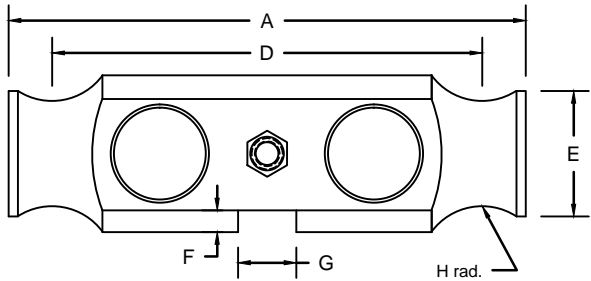


REVISIONS							
ZONE	LTR.	DESCRIPTION	DATE	ECN	BY	CKD	APVD
-	-	INITIAL RELEASE	10/01/08	-	-	-	-
-	B	REDRAWN FOR LABELING CONSISTENCY	12/15/15	2016-22	TB	AB	AA



PERFORMANCE SPECIFICATIONS:

- CAPACITIES: 35K, 50K & 75K LB
- RATED OUTPUT: 2.00 mV/V $\pm 0.1\%$
- SAFE OVERLOAD: 150% FS
- EXCITATION VOLTAGE: 10-20V AC/DC
- INPUT RESISTANCE: 700 ± 10 OHMS
- OUTPUT RESISTANCE: 700 ± 5 OHMS
- ZERO BALANCE: $\pm 1.00\%$ FS
- SEAL TYPE: WELDED SEALED
- NON-LINEARITY: $\pm 0.03\%$ FS
- HYSTERESIS: $\pm 0.02\%$ FS
- REPEATABILITY: $\pm 0.01\%$ FS
- CREEP: $\pm 0.02\%$ FS
- COMPENSATED TEMPERATURE RANGE: -10°C - $+40^{\circ}\text{C}$
- TEMPERATURE EFFECT ON ZERO: $\pm 0.0027\%$ FS/ $^{\circ}\text{C}$
- TEMPERATURE EFFECT ON OUTPUT: $\pm 0.0015\%$ FS/ $^{\circ}\text{C}$
- INSULATION RESISTANCE: >5000 MEGOHMS
- LOAD CELL CABLE: 4 CONDUCTOR, 50 FT BRAIDED SHIELD
- LOAD CELL WIRING:
 - GREEN +EXC
 - BLACK -EXC
 - WHITE +SIG
 - RED -SIG
 - BRAID/YELLOW: SHEILD
- FM APPROVED

RATED CAPACITY	DIMENSIONS									
	A	B	C	D	E	F	G	H	I	
35K-75K	8.25	2.50	1.80	7.25	2.00	0.38	0.93	0.75	1/2-14NPT	

"DO NOT ALTER WITHOUT AGENCY NOTIFICATION"

COTI GLOBAL SENSORS, INC.

CG-DB50000S DOUBLE ENDED BEAM LOAD CELL

SCALE	SIZE	PART/DRAWING NO.	REV.
NONE	B	DOD-CG-DB50000S	B
MODEL	CG-DB50000S	SHEET 1 OF 1	

<p>THIS DRAWING USES THIRD ANGLE PROJECTION</p>	<p>APPROVALS</p> <p>DRAWN: MTSI 10/01/08</p> <p>CHECKED: MB 10/01/08</p> <p>ENGINEER: AA 10/01/08</p> <p>APPROVED: AA 10/01/08</p>	DATE
		MATERIAL
		STAINLESS STEEL
<p>THIS DOCUMENT CONTAINS PROPRIETARY INFORMATION AND SUCH INFORMATION MAY NOT BE REPRODUCED OR DISCLOSED FOR ANY PURPOSE OR USED TO PRODUCE THE ARTICLE OR SUBJECT WITHOUT WRITTEN PERMISSION FROM COTI GLOBAL SENSORS, INC.</p>	<p>TOLERANCES UNLESS OTHERWISE SPECIFIED</p> <p>XX-± 0.01</p> <p>.XXX-± 0.005</p> <p>FRACTIONS-$\pm 1/16"$</p> <p>ANGLES: $\pm 1/2^{\circ}$</p>	