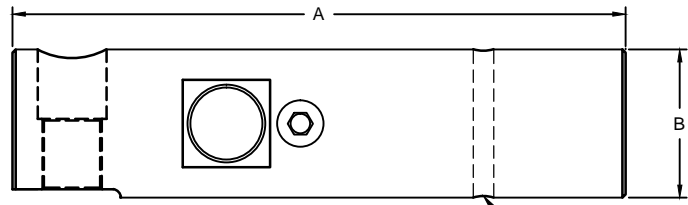
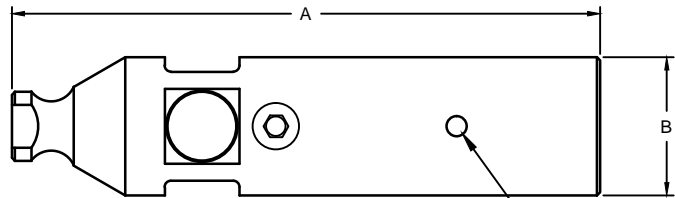


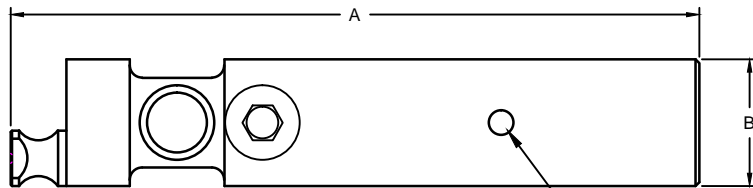
REVISIONS							
ZONE	LTR.	DESCRIPTION	DATE	ECN	BY	CKD	APVD
-	F	ADDED W STYLE 75K-EZPOST	04-26-19	2019-31	TB	AA	AA



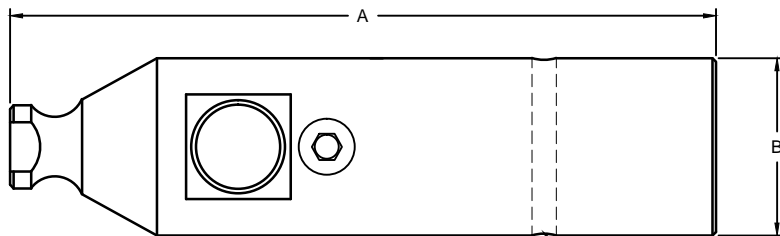
**W STYLE**  
60K-55829  
75K-EZPOST



**X STYLE**  
1.25K  
2.5K  
10K  
25K-37.5K  
50K-27173  
75K



**Y STYLE**  
5K



**Z STYLE**  
50K-50104  
60K-50935

**PERFORMANCE SPECIFICATIONS:**

- CAPACITIES: \*1.25K, 2.5K, 5K, 10K, 25K, (\*NON-NTEP) 37.5K, 50K, 60K, & \*75K LB
- RATED OUTPUT: 2.00 mV/V ±0.1%.  
3.00 mV/V ±0.1%. 37.5K, 50K, 60K, 75K
- SAFE OVERLOAD: 150% FS.
- EXCITATION VOLTAGE: 10V AC/DC. (20V MAX)
- INPUT RESISTANCE: 385 ±10Ω.
- OUTPUT RESISTANCE: 350 ±5Ω.
- ZERO BALANCE: ±1.00% FS.
- SEAL TYPE: HERMETICALLY SEALED IP67.
- NON-LINEARITY: ±0.03% FS.
- HYSTERESIS: ±0.02% FS.
- REPEATABILITY: ±0.01% FS.
- CREEP: ±0.02% FS
- NTEP RATED
- CLASS III 5,000 DIVISION, MULTIPLE CELL
- COMPENSATED TEMPERATURE RANGE: -10°C TO +40°C.
- TEMPERATURE EFFECT ZERO: ±0.0027% FS/°C.
- TEMPERATURE EFFECT ON OUTPUT: ±0.0015% FS/°C.
- INSULATION RESISTANCE: >5000 MEGOHMS.
- LOAD CELL CABLE:  
1.25K-10K: 4 CONDUCTOR, 20FT  
25K-75K: 4 CONDUCTOR, 50 FT (BRAIDED SHIELD)
- LOAD CELL WIRING:  
GRN (+EXC)  
BLK (-EXC)  
WHT (+SIG)  
RED (-SIG)  
BRAID/YELLOW: SHIELD
- 21.FM APPROVED

RATED CAPACITY	DIMENSIONS			
	STYLE	A	B	C
1.25K	X	11.50	1.25	0.31
2.5K	X	11.50	1.62	0.38
5K	Y	10.88	2.00	0.38
10K	X	12.62	2.50	0.38
25K-37.5K	X	14.88	3.50	0.50
50K-27173	X	14.88	3.50	0.50
50K-50104	Z	14.88	3.75	0.50
60K-50935	Z	14.88	3.75	0.50
60K-55829	W	15.39	3.75	0.50
75K-EZPOST	W	15.50	3.75	0.50
75K	X	18.88	5.00	0.50

THIS DRAWING USES THIRD ANGLE PROJECTION

THIS DOCUMENT CONTAINS PROPRIETARY INFORMATION AND SUCH INFORMATION MAY NOT BE REPRODUCED OR DISCLOSED FOR ANY PURPOSE OR USED TO PRODUCE THE ARTICLE OR SUBJECT WITHOUT WRITTEN PERMISSION FROM COTI GLOBAL SENSORS, INC.

TOLERANCES UNLESS OTHERWISE SPECIFIED:  
 .XX"±0.02"  
 .XXX"±0.005"  
 .XXXX"±0.0002"  
 FRACTIONS ±1/16"  
 ANGLES DEG. ±1/8"

APPROVALS		DATE
DRAWN:	TB	04/26/19
CHECKED:	AA	04/26/19
ENGINEER:	TB	04/26/19
APPROVED:	AA	04/26/19
MATERIAL:		STAINLESS STEEL

DO NOT ALTER WITHOUT AGENCY NOTIFICATION

**Coti Global Sensors**  
MANUFACTURING

Weighing Products Worldwide

**CG-WB-SS (NTEP)**  
**SINGLE ENDED BEAM**

SCALE	SIZE	PART/DRAWING NO.	REV.
NONE	B	DOD-CG-WB-SS	F
MODEL: CG-WB-SS			SHEET 1 OF 1