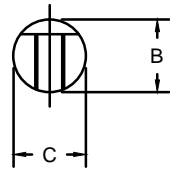
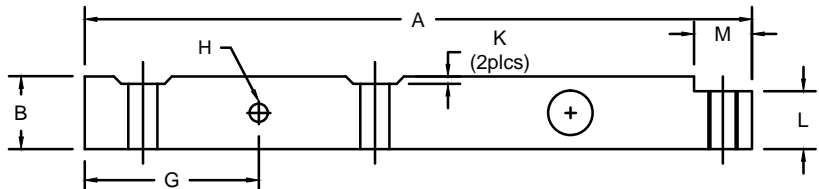
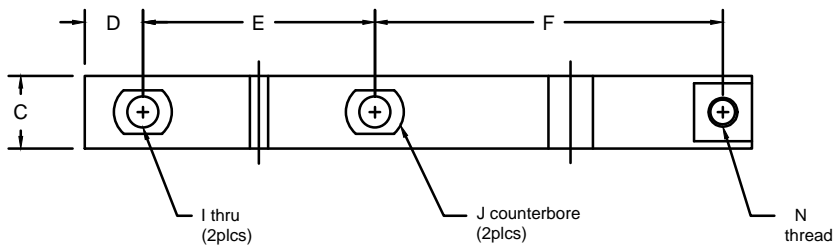


REVISIONS							
ZONE	LTR.	DESCRIPTION	DATE	ECN	BY	CKD	APVD
-	D	REDRAWN FOR LABELING CONSISTENCY	01/02/16	2016-66	TB	AB	AA



PERFORMANCE SPECIFICATIONS:

1. CAPACITIES: *1.25K & 2.5K LB
2. RATED OUTPUT: 2.00 mV/V ±0.1%
3. SAFE OVERLOAD: 150% FS
4. EXCITATION VOLTAGE: 10-20V AC/DC
5. INPUT RESISTANCE: 385 ±10 OHMS
6. OUTPUT RESISTANCE: 350 ±3 OHMS
7. ZERO BALANCE: ±1.00% FS
8. SEAL TYPE: ENVIRONMENTALLY SEALED, IP67
9. NON-LINEARITY: ±0.03% FS
10. HYSTERESIS: ±0.02% FS
11. REAPEATABLITY: ±0.01% FS
12. CREEP: ±0.02% FS
13. NTEP RATED
14. CLASS 111 5,000 DIVISION, MULTIPLE CELL
15. COMPENSATED TEMPERATURE RANGE: -10°C - +40°C
16. TEMPERATURE EFFECT ON ZERO: ±0.0027%FS/°C
17. TEMPERATURE EFFECT ON OUTPUT: ±0.0015%FS/°C
18. INSULATION RESISTANCE: >5000 MEGOHMS
19. LOAD CELL CABLE: 4 CONDUCTOR, 20 FT
20. LOAD CELL WIRING:
 - GREEN +EXC
 - BLACK -EXC
 - WHITE +SIG
 - RED -SIG
 - BRAID/YELLOW: SHEILD
21. FM APPROVED

* NON-NTEP

RATED CAPACITY	DIMENSIONS													
	A	B	C	D	E	F	G	H	I	J	K	L	M	N
1.25K	11.50	1.25	1.25	1.00	4.00	6.00	3.00	0.31	0.53	1.03	0.12	1.00	1.00	1/2-13UNC
2.5K	11.50	1.62	1.62	1.03	4.00	6.00	3.03	0.38	0.66	1.25	0.12	1.18	1.50	5/8-11UNC

"DO NOT ALTER WITHOUT AGENCY NOTIFICATION"

COTI GLOBAL SENSORS, INC.

**CG-WBL-SS SINGLE ENDED
NTEP LOAD CELL**

SCALE	SIZE	PART/DRAWING NO.	REV.
NONE	B	DOD-CG-WBL	D
MODEL	CG-WBL	SHEET 1 OF 1	

<p>THIS DRAWING USES THIRD ANGLE PROJECTION</p>	APPROVALS	DATE
	DRAWN: MTSI	10/01/08
	CHECKED: MB	10/01/08
	ENGINEER: AA	10/01/08
<p>THIS DOCUMENT CONTAINS PROPRIETARY INFORMATION AND SUCH INFORMATION MAY NOT BE REPRODUCED OR DISCLOSED FOR ANY PURPOSE OR USED TO PRODUCE THE ARTICLE OR SUBJECT WITHOUT WRITTEN PERMISSION FROM COTI GLOBAL SENSORS, INC.</p>	APPROVED: AA	10/01/08
	MATERIAL	STAINLESS STEEL
<p>TOLERANCES UNLESS OTHERWISE SPECIFIED</p> <p>XX±.01</p> <p>.XXX±.005</p> <p>FRACTIONS±1/16"</p> <p>ANGLES: ±1/2°</p>		