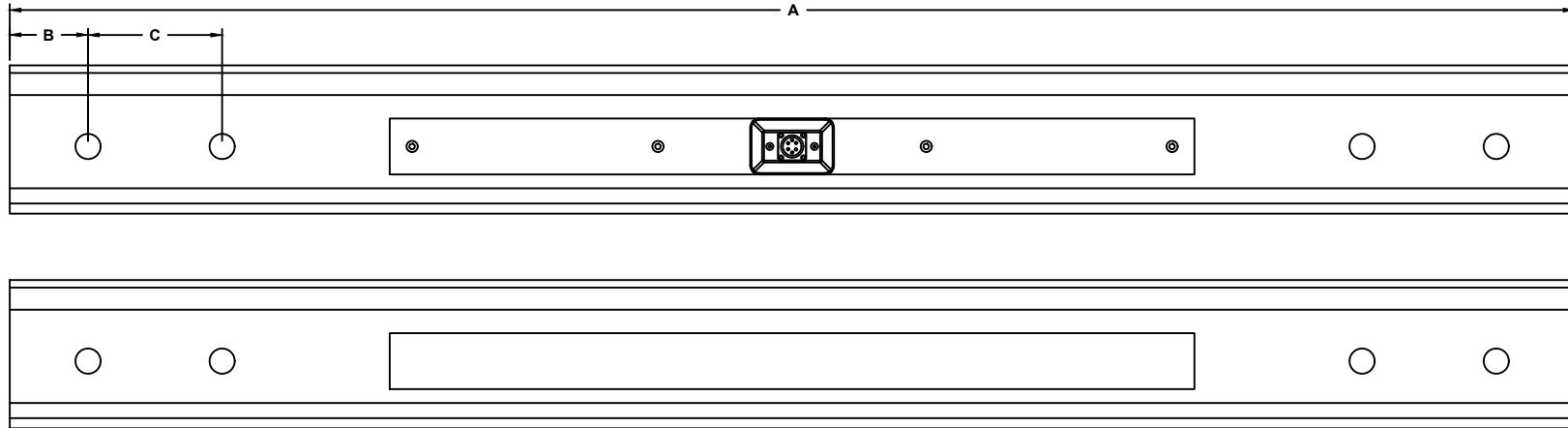


REVISIONS

ZONE	LTR.	DESCRIPTION	DATE	ECN	BY	CKD	APVD
-	-	Initial Drawing	08/26/20	2020-16	TB	DC	AT
-	A	ADDED NEW MODEL CG-RXR-90	05/10/21	2021-08	GC	AT	AT
-	B	ADDED NEW MODEL CG-RXR-132	01/27/22	2022-08	TB	AT	AT



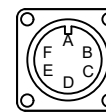
PERFORMANCE SPECIFICATIONS:

1. CAPACITIES: 40K
2. RATED OUTPUT: 0.8 mV/V
3. SAFE OVERLOAD: 150% FS.
4. EXCITATION VOLTAGE: 10V AC/DC (15V MAX).
5. INPUT RESISTANCE: 760 ±10Ω
6. OUTPUT RESISTANCE: 700 ±5Ω
7. ACCURACY: ±0.25%
8. LOAD CELL WIRING: 30 ft STANDARD CABLE W/6 PIN CONNECTOR

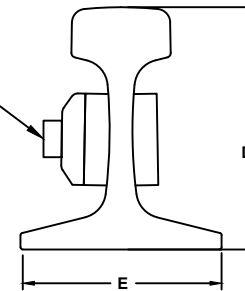
- GRN (+EXC)
- BLK (-EXC)
- WHT (+SIG)
- RED (-SIG)
- BRAID/YELLOW: SHIELD

RATED CAPACITY	DIMENSIONS				
	A	B	C	D	E
CG-RXR-90	70.00	2.69	5.50	5.63	5.13
CG-RXR-115	70.00	3.50	6.00	6.63	5.50
CG-RXR-132	70.00	3.50	6.00	7.13	6.00

6 PIN CONNECTOR



- PIN A (- SIG)
- PIN B (+ EXC)
- PIN C (+ SIG)
- PIN D (- EXC)
- PIN E (SHIELD)
- PIN F (BLANK)



DO NOT ALTER WITHOUT AGENCY NOTIFICATION

**Coti Global Sensors**  
MANUFACTURING

Weighing Products Worldwide

CG-RXR

<p>THIS DRAWING USES THIRD ANGLE PROJECTION</p> <p>THIS DOCUMENT CONTAINS PROPRIETARY INFORMATION AND SUCH INFORMATION MAY NOT BE REPRODUCED OR DISCLOSED FOR ANY PURPOSE OR USED TO PRODUCE THE ARTICLE OR SUBJECT WITHOUT WRITTEN PERMISSION FROM COTI GLOBAL SENSORS, INC.</p> <p>                 TOLERANCES UNLESS OTHERWISE SPECIFIED:                  .XX=±0.02"                  .XXX=±0.005"                  .XXX=±0.0002"                  FRACTIONS ±1/16"                  ANGLES DEC. ±1/8"             </p>	APPROVALS	DATE
	DRAWN: TB	08/21/20
	CHECKED: DC	09/21/20
	ENGINEER: TB	08/21/20
	APPROVED: AT	08/21/20
MATERIAL:	115 RE Rail	

SCALE	SIZE	PART/DRAWING NO.	REV.
NONE	B	DOD-CG-RXR	B

MODEL: CG-RXR 115 SHEET 1 OF 1