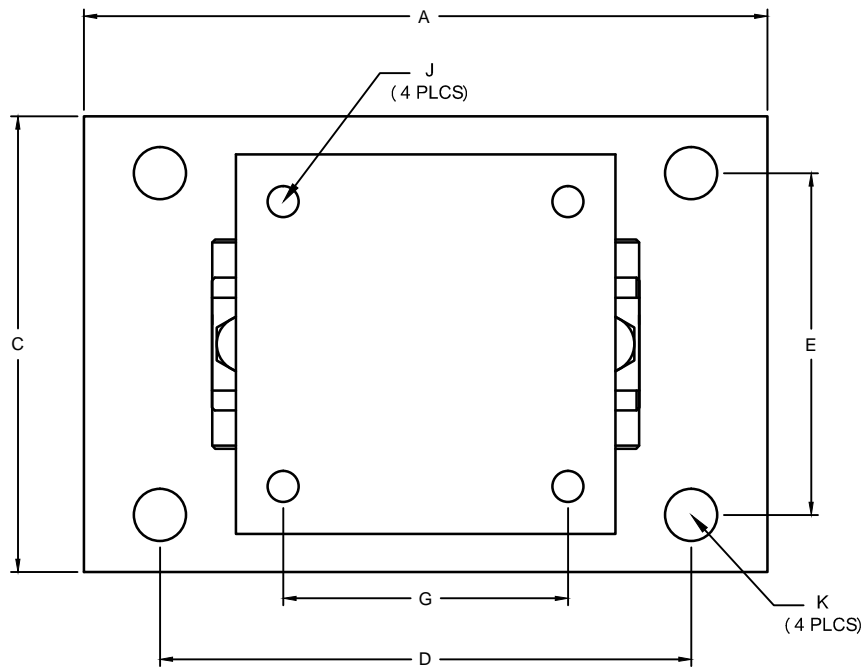


REVISIONS							
ZONE	LTR.	DESCRIPTION	DATE	ECN	BY	CKD	APVD
-	-	INITIAL DRAWING	10/01/08	-	-	-	-
-	A	ADDED DIMENSION (N)&(P)	04/17/19	2019-29	TB	AT	AA



PERFORMANCE SPECIFICATIONS:

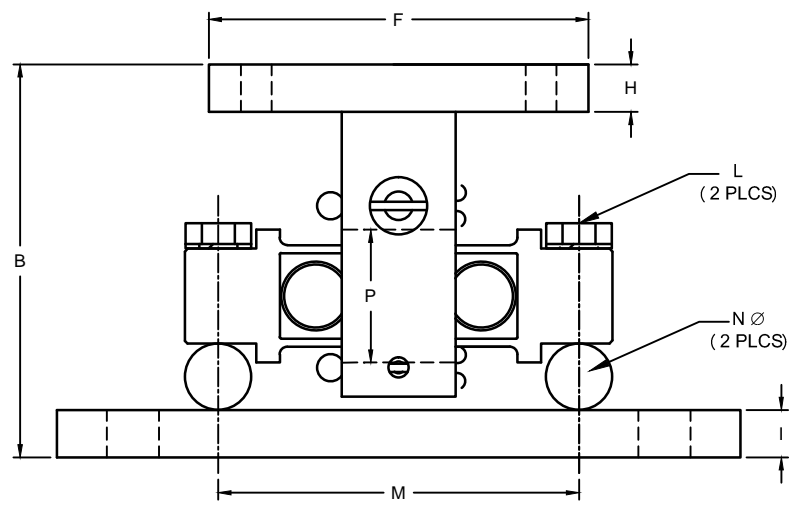
- CAPACITIES: 5K, 10K, 20K, 30K, 40K, 50K, 60K, 100K, 150K, 200K, & 250K LB.
- RATED OUTPUT: 3.00 mV/V
- SAFE OVERLOAD: 150% FS.
- EXCITATION VOLTAGE: 10V AC/DC (15V MAX) .
- INPUT RESISTANCE: 700 Ω.
- OPERATING TEMPERATURE RANGE: -20°C - +60°C
- LOAD CELL CABLE: 4 CONDUCTOR, 50FT. (BRAIDED SHIELD)
- MATERIAL:

LOAD CELL:

- STAINLESS STEEL: 10K-60K CAPACITIES ONLY
- ALLOY STEEL: ALL AVAILABLE CAPACITIES (NICKEL PLATED)

MOUNT ASSEMBLY:

- STAINLESS STEEL : 10K-60K CAPACITIES ONLY
- MILD STEEL : ALL AVAILABLE CAPACITIES (NICKEL PLATED)



RATED CAPACITY	DIMENSIONS														
	A	B	C	D	E	F	G	H	I	J	K	L	M	N	P
5K-20K	11.00	5.31	7.50	8.00	4.00	6.00	3.00	0.50	0.75	0.56	1.06	5/8-18 UNF	6.87	1.50	2.25
30K-60K	15.00	8.43	10.00	11.50	6.00	8.00	5.12	0.75	1.00	0.68	1.19	1-14 UNF	8.50	2.00	3.74
100K	18.00	10.37	12.00	14.00	9.00	10.00	7.50	1.25	1.25	0.81	1.38	1-14 UNF	9.50	1.75	3.94
150K	18.00	10.37	12.00	14.00	9.00	10.00	7.50	1.25	1.25	0.81	1.38	1-14 UNF	9.50	2.00	4.33
200K-250K	26.00	16.75	12.00	20.00	6.00	12.00	9.00	2.00	2.00	1.06	1.88	1 1/2-12UNF	13.00	3.00	5.89



DO NOT ALTER WITHOUT AGENCY NOTIFICATION

Coti Global Sensors
MANUFACTURING

Weighing Products Worldwide

CG-03M		SCALE	SIZE	PART/DRAWING NO.	REV.
TANK MOUNT		NONE	B	DOD-CG-03M	A
MODEL : CG-03M		SHEET			1 OF 1

THIS DRAWING USES THIRD ANGLE PROJECTION

TOLERANCES UNLESS OTHERWISE SPECIFIED:
 .XX"±0.02"
 .XXX"±0.005"
 .XXXX"±0.0002"
 FRACTIONS ±1/16"
 ANGLES DEG. ±1/8"

APPROVALS	DATE
DRAWN: TB	04/17/19
CHECKED: AA	04/17/19
ENGINEER: TB	04/17/19
APPROVED: AA	04/17/19

MATERIAL: SEE SPECIFICATIONS

THIS DOCUMENT CONTAINS PROPRIETARY INFORMATION AND SUCH INFORMATION MAY NOT BE REPRODUCED OR DISCLOSED FOR ANY PURPOSE OR USED TO PRODUCE THE ARTICLE OR SUBJECT WITHOUT WRITTEN PERMISSION FROM COTI GLOBAL SENSORS, INC.