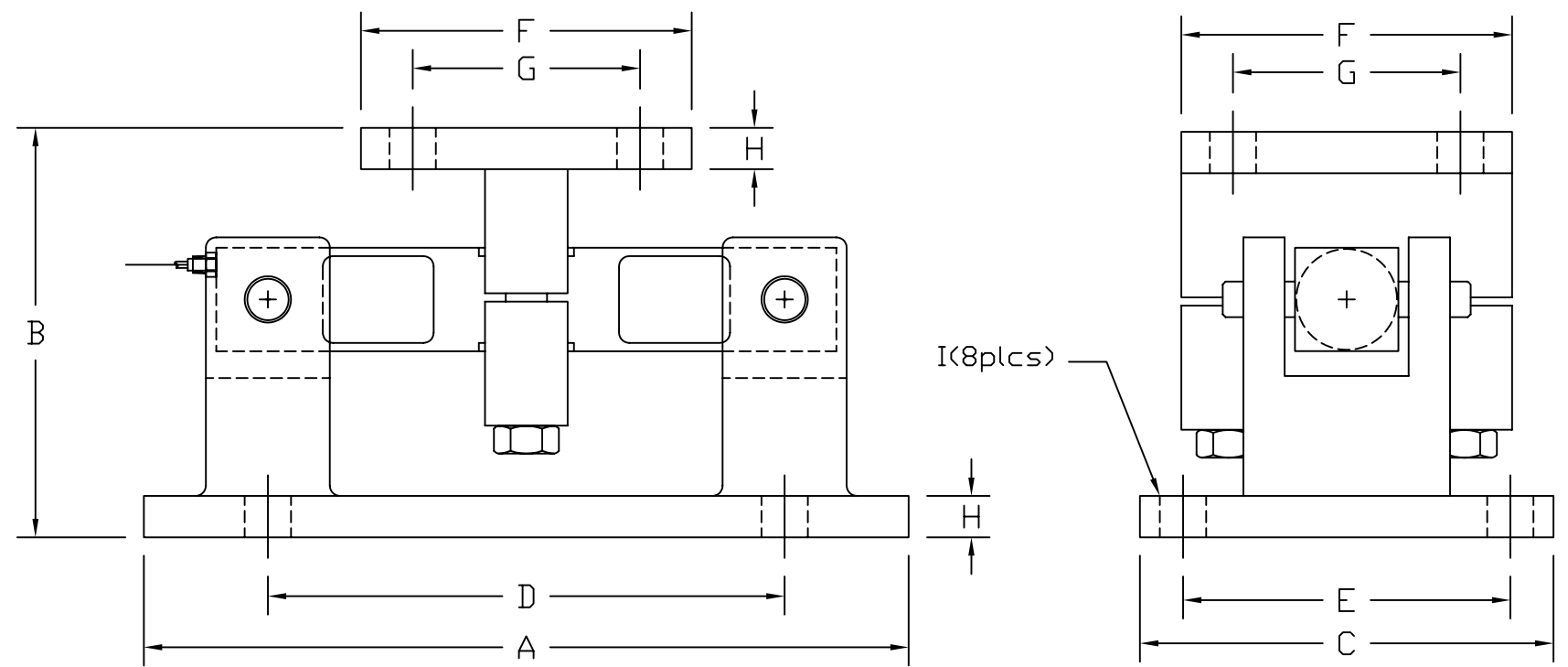


REVISIONS							
ZONE	LTR.	DESCRIPTION	DATE	ECN	BY	CKD	APVD
-	-	INITIAL RELEASE	10/01/08	-	-	-	-



PERFORMANCE SPECIFICATIONS:

- CAPACITIES: 1K, 1.5K, 2K, 2.5K, 3K, 5K, 10K, 15K, 20K, 25K, 35K, 50K, 75K, 100K, & 125K LB
- SAFE OVERLOAD: 150% FS
- FULL SCALE OUTPUT: 3.00 mV/V
- EXCITATION VOLTAGE: 10-15V AC/DC
- LOAD CELL RESISTANCE: 700 OHMS
- LOAD CELL CABLE:
 - 1K-5K: 4 CONDUCTOR, 50 FT
 - 10K-125K: 4 CONDUCTOR, 50 FT (BRAIDED SHIELD)
- OPERATING TEMPERATURE RANGE: -20°C - +60°C
- MATERIAL
 - LOAD CELL: ALLOY STEEL (NICKEL PLATED) OR STAINLESS STEEL
 - ASSEMBLY: MILD STEEL (NICKEL PLATED) OR STAINLESS STEEL

RATED CAPACITY	DIMENSIONS										
	A	B	C	D	E	F	G	H	I		
1K-5K	9.25	5.00	5.00	6.25	3.75	4.00	2.75	0.50	0.56		
10K-25K	12.00	7.90	8.00	7.50	6.00	8.00	6.00	0.75	0.81		
35K	12.00	7.90	8.00	7.50	6.00	8.00	6.00	0.75	0.81		
50K	16.25	9.30	12.00	11.50	9.50	9.00	6.50	1.00	0.81		
75K	16.25	9.30	12.00	11.50	9.50	9.00	6.50	1.00	0.81		
100K-125K	23.50	11.75	14.00	20.00	12.00	10.00	8.00	1.12	1.12		

DO NOT ALTER WITHOUT AGENCY NOTIFICATION

COTI GLOBAL SENSORS, INC.

**CG-16M
TANK MOUNT**

<p>THIS DRAWING USES THIRD ANGLE PROJECTION</p>	APPROVALS		DATE
	DRAWN: MTSI		10/01/08
	CHECKED: MB		10/01/08
	ENGINEER: AA		10/01/08
	APPROVED: AA		10/01/08
<p>THIS DOCUMENT CONTAINS PROPRIETARY INFORMATION AND SUCH INFORMATION MAY NOT BE REPRODUCED OR DISCLOSED FOR ANY PURPOSE OR USED TO PRODUCE THE ARTICLE OR SUBJECT WITHOUT WRITTEN PERMISSION FROM COTI GLOBAL SENSORS, INC.</p>	TOLERANCES UNLESS OTHERWISE SPECIFIED		
	.XX-±.01 .XXX-±.005 FRACTIONS-±1/16" ANGLES: ±1/2"		
MATERIAL			
SEE NOTES			

SCALE	SIZE	PART/DRAWING NO.	REV.
NONE	B	DOD-CG-16M	-
MODEL CG-16M		SHEET 1 OF 1	