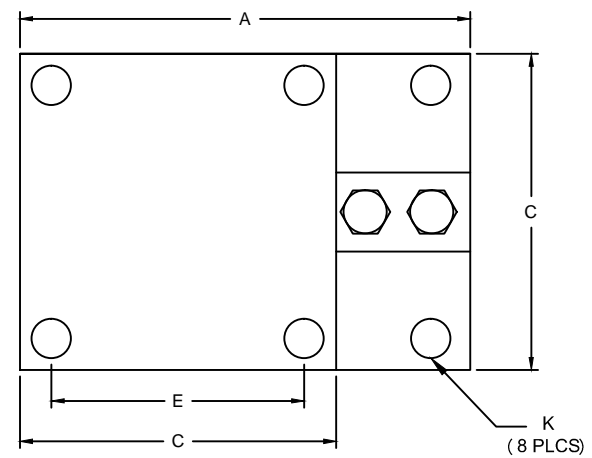
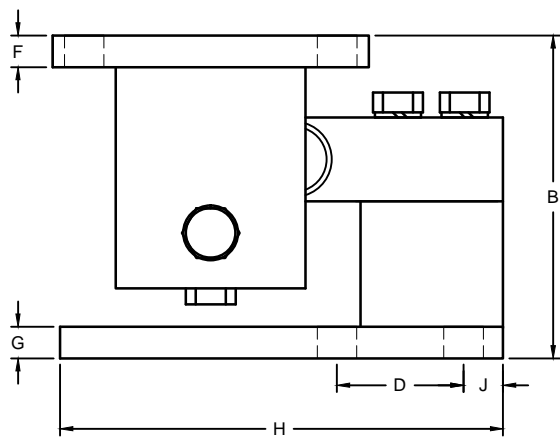


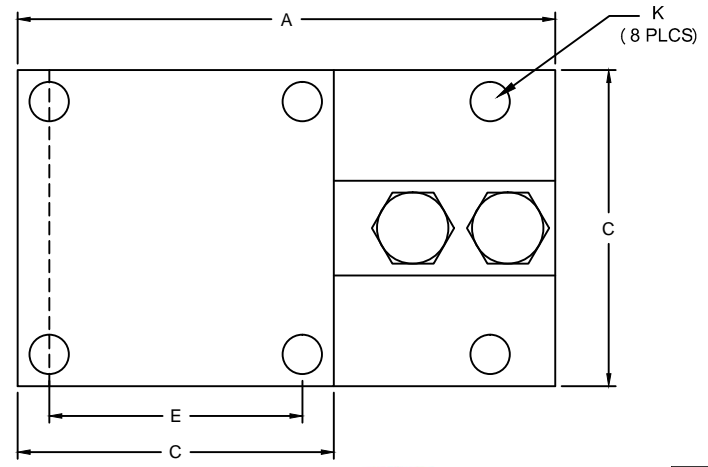
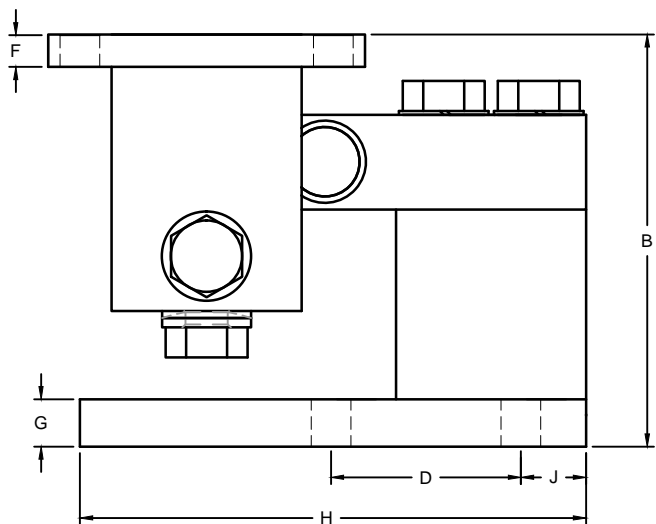
REVISIONS							
ZONE	LTR.	DESCRIPTION	DATE	ECN	BY	CKD	APVD
-	-	INITIAL DRAWING	10/01/08	-	-	-	-
-	B	ADDED DIMENSIONS (H) (J) (K)	05/07/19	2019-32	TB	AT	AA



**PERFORMANCE SPECIFICATIONS:**

- CAPACITIES: 250lb, 500lb, 1K, 1.5K, 2K, 2.5K, 4K, 5KSE, 5K, 10K LB.
- RATED OUTPUT: 3.00 mV/V
- SAFE OVERLOAD: 150% FS.
- EXCITATION VOLTAGE: 10V AC/DC (15V MAX)
- INPUT RESISTANCE: 350 Ω.
- OPERATING TEMPERATURE RANGE: -20°C - +60°C
- LOAD CELL CABLE: 4 CONDUCTOR, 20FT.
- MATERIAL:
  - LOAD CELL:
    - STAINLESS STEEL
    - ALLOY STEEL (NICKEL PLATED)
  - MOUNT ASSEMBLY:
    - STAINLESS STEEL
    - MILD STEEL (NICKEL PLATED)

**250LB-5KSE**



**5K-10K**

RATED CAPACITY	DIMENSIONS									
	A	B	C	D	E	F	G	H	J	K
250LB-5KSE	7.00	5.00	5.00	2.00	4.00	0.50	0.50	7.00	0.63	0.62
5K-10K	8.50	6.50	5.00	3.00	4.00	0.50	0.75	8.00	1.03	0.62



<p>THIS DRAWING USES THIRD ANGLE PROJECTION</p>	<p>THIS DOCUMENT CONTAINS PROPRIETARY INFORMATION AND SUCH INFORMATION MAY NOT BE REPRODUCED OR DISCLOSED FOR ANY PURPOSE OR USED TO PRODUCE THE ARTICLE OR SUBJECT WITHOUT WRITTEN PERMISSION FROM COTI GLOBAL SENSORS, INC.</p>	<p>TOLERANCES UNLESS OTHERWISE SPECIFIED          .XX"±0.02"          .XXX"±0.005"          .XXXX"±0.0002"          FRACTIONS ±1/16"          ANGLES DEG. #1/8</p>	APPROVALS	DATE
			DRAWN: TB	05/07/19
			CHECKED: AA	05/07/19
			ENGINEER: TB	05/07/19
MATERIAL: SEE SPECIFICATIONS			APPROVED: AA	05/07/19

DO NOT ALTER WITHOUT AGENCY NOTIFICATION

**Coti Global Sensors**  
MANUFACTURING

Weighing Products Worldwide

**CG-23M**  
**TANK MOUNT**

SCALE	SIZE	PART/DRAWING NO.	REV.
NONE	B	DOD-CG-23M	B

MODEL: CG-23M SHEET 1 OF 1