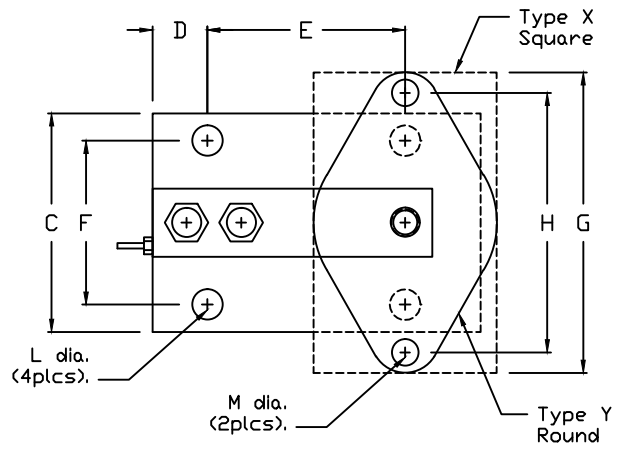
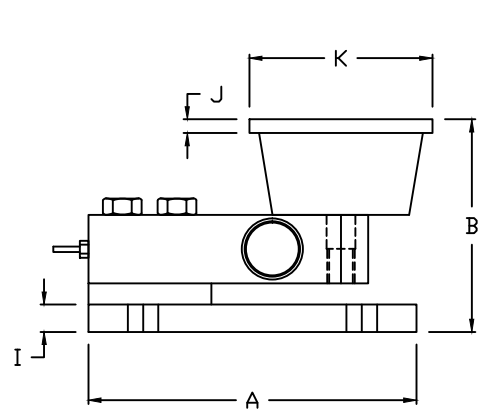


REVISIONS							
ZONE	LTR.	DESCRIPTION	DATE	ECN	BY	CKD	APVD
-	-	INITIAL RELEASE	10/01/08	-	-	-	-
-	-	MOUNTING HOLE DIAMETER	10/19/11	-	-	-	-



**PERFORMANCE SPECIFICATIONS:**

1. CAPACITIES: 25LB, 50LB, 75LB, 100LB, 150LB, 250LB, 500LB, 1K, 1.5K, 2K, 2.5K, 4K, & 5KSE LB
2. SAFE OVERLOAD: 150% FS
3. FULL SCALE OUTPUT: 3.00 mV/V
4. EXCITATION VOLTAGE: 10-15V AC/DC
5. LOAD CELL RESISTANCE: 350 OHMS
6. LOAD CELL CABLE: 4 CONDUCTOR, 20 FT
7. OPERATING TEMPERATURE RANGE: -20°C - +60°C
8. MATERIAL  
LOAD CELL: ALLOY STEEL (NICKEL PLATED) OR STAINLESS STEEL  
ASSEMBLY: STAINLESS STEEL

RATED CAPACITY	DIMENSIONS													TYPE
	A	B	C	D	E	F	G	H	I	J	K	L	M	
25LB-250LB	4.00	3.13	3.00	0.37	3.25	2.25	3.88	3.00	0.50	0.22	2.38	0.34	0.34	Y
500LB	6.00	3.88	4.00	1.00	4.00	3.00	5.50	4.13	0.50	0.25	3.38	0.44	0.56	Y
1K	6.00	4.00	4.00	1.00	4.00	3.00	5.13	4.13	0.50	0.25	3.00	0.44	0.44	X
1.5K-2.5K	6.00	4.00	4.00	1.00	4.00	3.00	6.25	5.00	0.50	0.38	4.62	0.44	0.44	X
4K-5KSE	6.00	4.50	4.00	1.00	4.00	3.00	6.25	5.00	1.00	0.38	4.62	0.47	0.56	X

**\*DO NOT ALTER WITHOUT AGENCY NOTIFICATION\***

**COTI GLOBAL SENSORS, INC.**

**CG-59M  
TANK MOUNT**

SCALE	SIZE	PART/DRAWING NO.	REV.
NONE	B	DOD-CG-59M	A
MODEL: CG-59M	SHEET		1 OF 1

<p>THIS DRAWING USES THIRD ANGLE PROJECTION</p>	<p>TOLERANCES UNLESS OTHERWISE SPECIFIED BY THE DRAWING:</p> <p>0.0000 ± 0.0005 FRA 0.0000 ± 0.0005 FRA 0.0000 ± 0.0005 FRA</p>	APPROVALS	DATE
		DRAWN: DMH	10/19/11
		CHECKED: MB	10/19/11
		ENGINEER: DMH	10/19/11
APPROVED: AA	10/19/11	MATERIAL	SEE NOTES

THIS DOCUMENT CONTAINS PROPRIETARY INFORMATION AND SUCH INFORMATION MAY NOT BE REPRODUCED OR DISCLOSED FOR ANY PURPOSE OR USED TO PRODUCE THE ARTICLE OR SUBJECT WITHOUT WRITTEN PERMISSION FROM COTI GLOBAL SENSORS, INC.