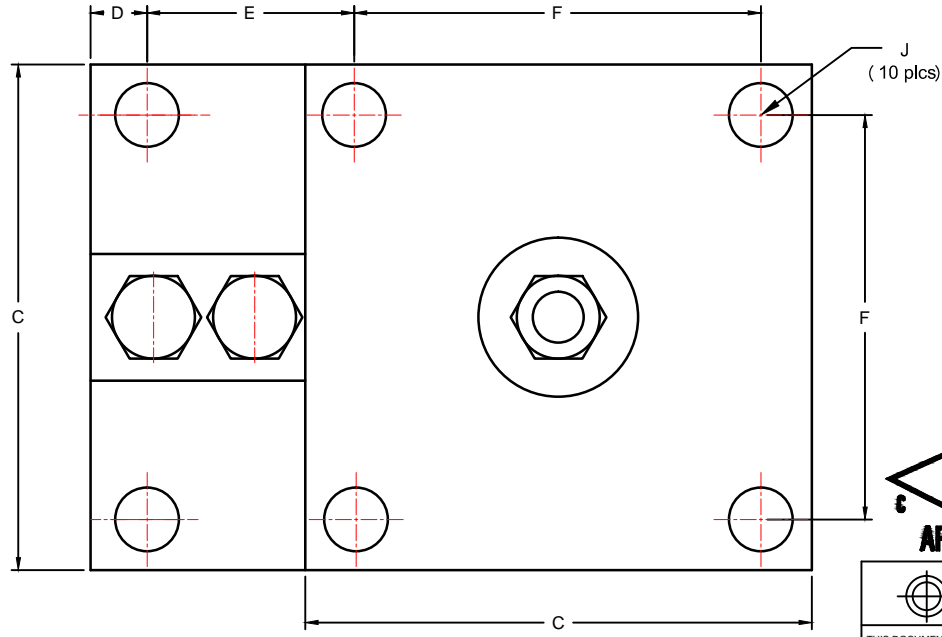
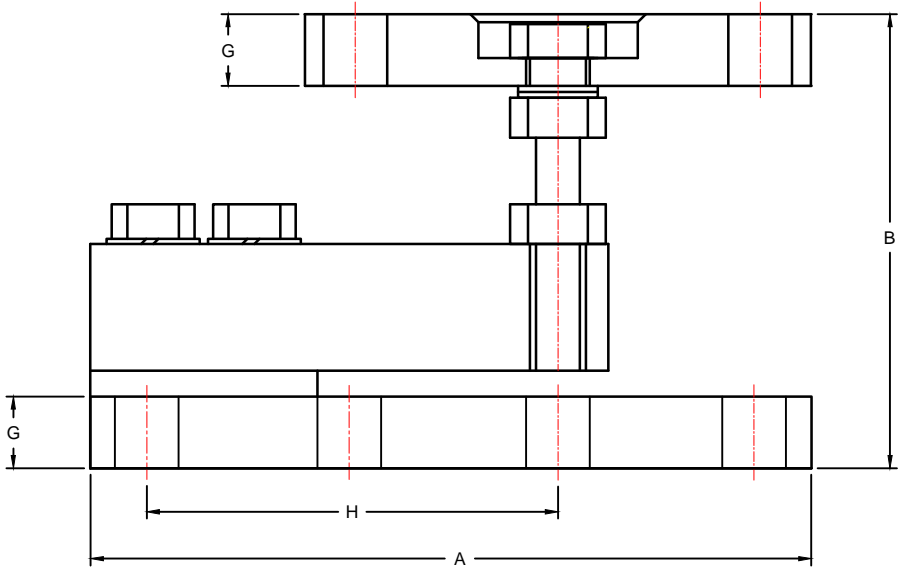


REVISIONS							
ZONE	LTR.	DESCRIPTION	DATE	ECN	BY	CKD	APVD
-	C	UPDATED TITLE BLOCK & ADDED DIMENSIONS	01-09-19	2019-01	TB	AA	AA

PERFORMANCE SPECIFICATIONS:

- CAPACITIES:
250LB, 500LB, 1K, 1.5K, 2K, 2.5K,
4K, 5KSE, 5KLE, 10K, 15K, 20K
- RATED OUTPUT: 3.00 mV/V
- SAFE OVERLOAD: 150% FS.
- EXCITATION VOLTAGE: 10V AC/DC (15V MAX)
- LOAD CELL RESISTANCE: 350 ±3Ω.
- OPERATING TEMPERATURE RANGE: -20°C - +60°C
- LOAD CELL CABLE: 4 CONDUCTOR, 20FT
- MATERIAL
LOAD CELL: ALLOY STEEL (NICKEL PLATED) OR
STAINLESS STEEL
ASSEMBLY: MILD STEEL (NICKEL PLATED) OR
STAINLESS STEEL

RATED CAPACITY	DIMENSIONS								
	A	B	C	D	E	F	G	H	J
250LB-5KSE	7.12	4.50-5.00	5.00	0.63	2.00	4.00	0.70	4.00	0.63
5KLE-10K	8.50	5.50-6.00	5.00	1.00	3.00	4.00	0.94	5.00	0.63
15K-20K	10.88	7.00-7.50	6.00	1.00	4.63	4.50	1.44	6.88	0.88



DO NOT ALTER WITHOUT AGENCY NOTIFICATION

Coti Global Sensors
MANUFACTURING

Weighing Products Worldwide

<p>THIS DRAWING USES THIRD ANGLE PROJECTION</p>	<p>TOLERANCES UNLESS OTHERWISE SPECIFIED: .XX"±0.02" .XXX"±0.005" .XXXX"±0.0002" FRACTIONS ±1/16" ANGLES DEG. ±1/8"</p>	APPROVALS	DATE
		DRAWN: TB	01/09/19
		CHECKED: AA	01/09/19
		ENGINEER: TB	01/09/19
<p>APPROVED: AA</p>		01/09/19	
<p>MATERIAL: SEE NOTES</p>			

CG-82M			REV. C
SCALE	SIZE	PART/DRAWING NO.	
NONE	B	DOD-CG-82M	
MODEL: CG-82M			SHEET 1 OF 1

THIS DOCUMENT CONTAINS PROPRIETARY INFORMATION AND SUCH INFORMATION MAY NOT BE REPRODUCED OR DISCLOSED FOR ANY PURPOSE OR USED TO PRODUCE THE ARTICLE OR SUBJECT WITHOUT WRITTEN PERMISSION FROM COTI GLOBAL SENSORS, INC.