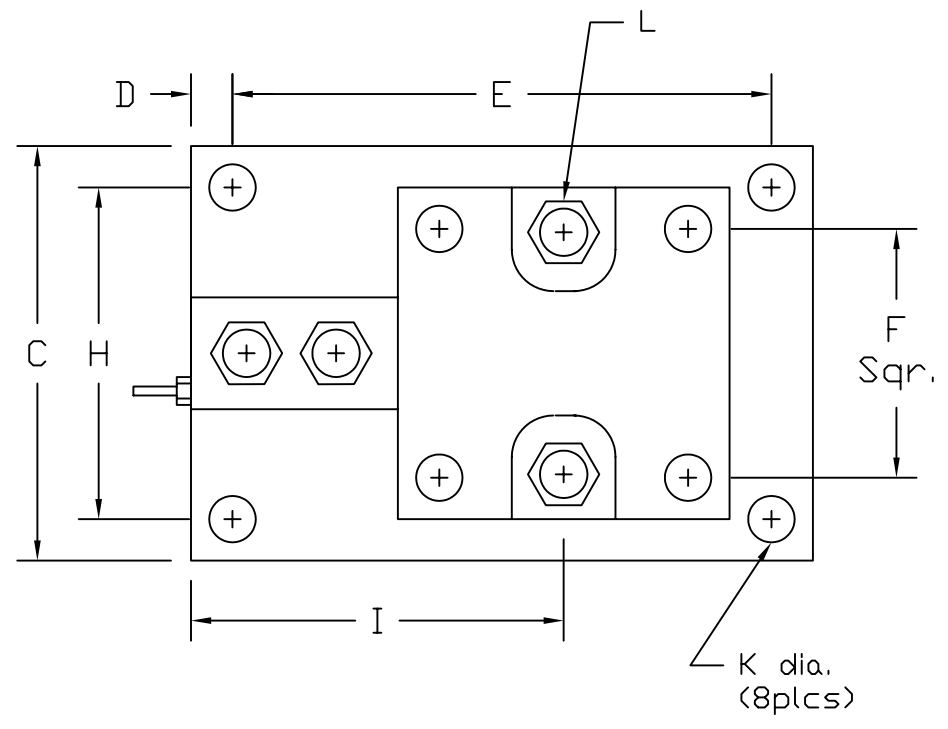
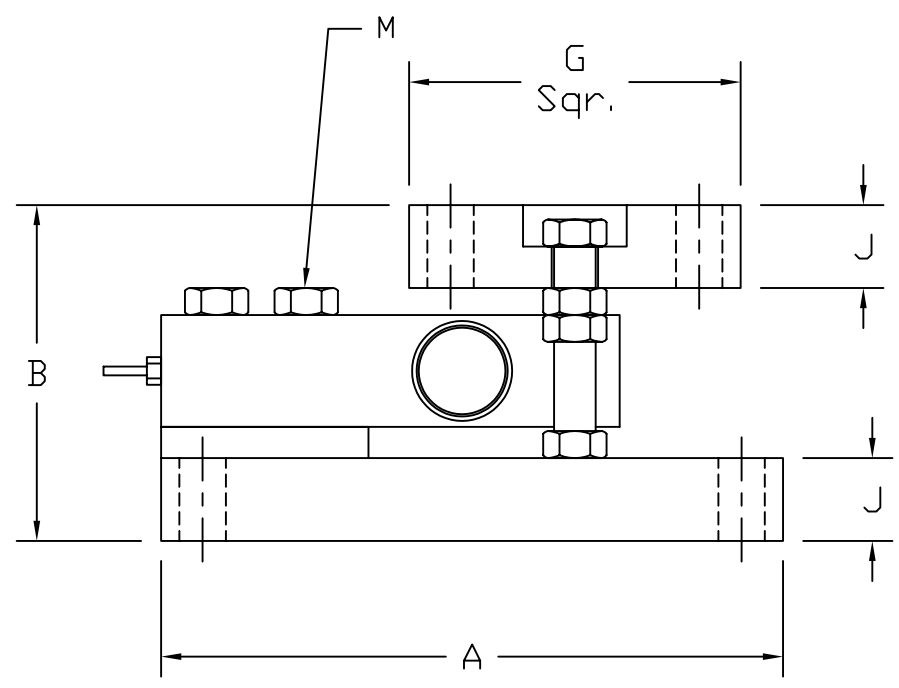


REVISIONS							
ZONE	LTR.	DESCRIPTION	DATE	ECN	BY	CKD	APVD
-	-	INITIAL RELEASE	10/01/08	-	-	-	-



PERFORMANCE SPECIFICATIONS:

- CAPACITIES: 500LB, 1K, 1.25K, 2.5K, 4K, 5K, & 10K LB
- SAFE OVERLOAD: 150% FS
- FULL SCALE OUTPUT: 2.00 mV/V
- EXCITATION VOLTAGE: 10-15V AC/DC
- LOAD CELL RESISTANCE: 350 OHMS
- LOAD CELL CABLE: 4 CONDUCTOR, 20 FT
- OPERATING TEMPERATURE RANGE: -20°C - +60°C
- MATERIAL
LOAD CELL: STAINLESS STEEL
ASSEMBLY: STAINLESS STEEL

RATED CAPACITY	DIMENSIONS													
	A	B	C	D	E	F	G	H	I	J	K	L	M	
500LB-2.5K	7.50	3.78	5.00	0.50	6.50	3.00	4.00	4.00	4.50	1.00	0.56	1/2-13UNC	1/2-13UNC	
4K	7.50	3.94	5.00	0.50	6.50	3.00	4.00	4.00	4.50	1.00	0.56	1/2-13UNC	1/2-13UNC	
5K	7.50	4.03	5.00	0.50	6.50	3.00	4.00	4.00	4.50	1.00	0.56	1/2-13UNC	1/2-13UNC	
10K	8.50	4.28	5.00	0.50	7.50	3.00	4.00	4.00	6.00	1.00	0.56	1/2-13UNC	3/4-10UNC	

DO NOT ALTER WITHOUT AGENCY NOTIFICATION

COTI GLOBAL SENSORS, INC.

**CG-RTM
TANK MOUNT**

<p>THIS DRAWING USES THIRD ANGLE PROJECTION</p>	APPROVALS	DATE
	DRAWN: MTSI	10/01/08
	CHECKED: MB	10/01/08
	ENGINEER: AA	10/01/08
	APPROVED: AA	10/01/08
<p>THIS DOCUMENT CONTAINS PROPRIETARY INFORMATION AND SUCH INFORMATION MAY NOT BE REPRODUCED OR DISCLOSED FOR ANY PURPOSE OR USED TO PRODUCE THE ARTICLE OR SUBJECT WITHOUT WRITTEN PERMISSION FROM COTI GLOBAL SENSORS, INC.</p>	<p>TOLERANCES UNLESS OTHERWISE SPECIFIED .XX±.01 .XXX±.005 FRACTIONS±1/16" ANGLES: ±1/2"</p>	
	<p>MATERIAL SEE NOTES</p>	

SCALE	SIZE	PART/DRAWING NO.	REV.
NONE	B	DOD-CG-RTM	-
MODEL CG-RTM			SHEET 1 OF 1