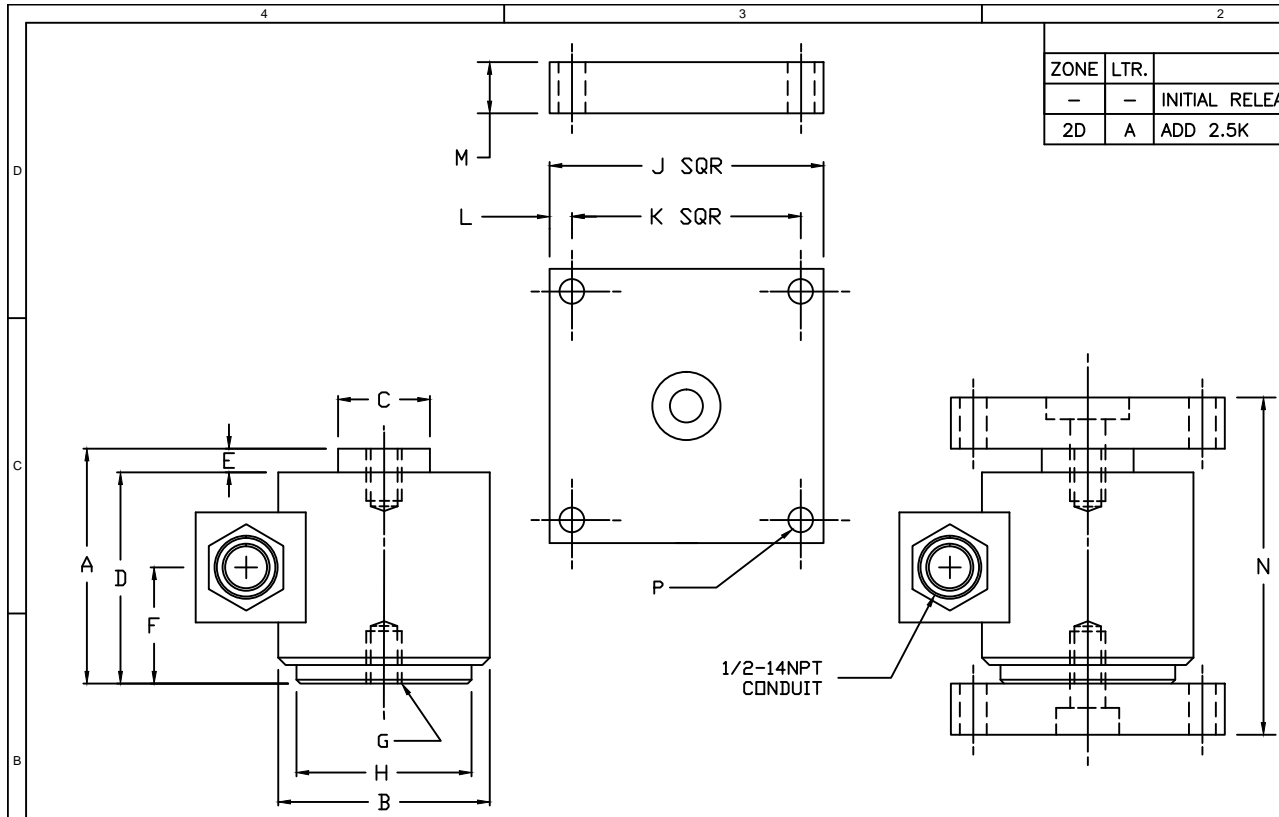


REVISIONS							
ZONE	LTR.	DESCRIPTION	DATE	ECN	BY	CKD	APVD
-	-	INITIAL RELEASE	10/01/08	-	-	AA	AA
2D	A	ADD 2.5K	02/22/13	-	FR	AA	AA

- PERFORMANCE SPECIFICATIONS:**
- CAPACITIES: 1K, 2K, 2.5K, 5K, 10K, 20K, 25K, 50K, 100K, 150K, 200K, and 250K
 - RATED OUTPUT: 2.00 mV/V ±0.1%
 - SAFE OVERLOAD: 150% FS
 - EXCITATION VOLTAGE: 10-20V AC/DC
 - INPUT RESISTANCE: 380 ±10 OHMS
 - OUTPUT RESISTANCE: 350 ±5 OHMS
 - ZERO BALANCE: ±1.00% FS
 - SEAL TYPE: HERMETICALLY SEALED, IP68
 - NON-LINEARITY: ±0.05% FS
 - HYSTERESIS: ±0.03% FS
 - REPEATABILITY: ±0.01% FS
 - CREEP: ±0.03% FS
 - COMPENSATED TEMPERATURE RANGE: -10°C - +40°C
 - TEMPERATURE EFFECT ON ZERO: ±0.0027%FS/°C
 - TEMPERATURE EFFECT ON OUTPUT: ±0.0015%FS/°C
 - INSULATION RESISTANCE: >5000 MEGOHMS
 - LOAD CELL CABLE: 4 CONDUCTOR 30 FT
 - LOAD CELL WIRING:
(GREEN +EXC), (BLACK -EXC), (WHITE +SIG), (RED -SIG)
BRAID/YELLOW: SHIELD
 - FM APPROVED
 - Max. SIDE LOAD OR UPLIFT LOAD 3% FS.
 - OPERATING TEMPERATURE RANGE -20 TO +60 C



RATED CAPACITIES	DIMENSIONS														
	A	B	C	D	E	F	G (2 PLS)	H	J	K	L	M	N	P	
1K-50K	3.25	3.00	1.25	2.82	0.43	1.57	1/2-20UNF x.50deep	2.28							
100K	5.00	4.00	2.31	4.43	0.57	2.44	1/2-20UNF x.50deep	3.13							
150K-250K	7.25	6.00	3.00	6.25	1.00	3.34	1/2-20UNF x.50deep	5.28							
1K-50K w/5" PLATES									5.00	3.50	0.75	1.00	5.25	0.56	
1K-50K w/8" PLATES									8.00	6.00	1.00	1.00	5.25	0.56	
100K w/5" PLATES									5.00	3.50	0.75	1.00	7.00	0.62	
100K w/8" PLATES									8.00	6.00	1.00	1.00	7.00	0.62	
150K-250K w/8" PLATES									8.00	6.00	1.00	1.00	9.25	0.62	

'DO NOT ALTER WITHOUT AGENCY NOTIFICATION'

COTI GLOBAL SENSORS, INC.

CG-SP9M COMPRESSION TANK MOUNT

THIS DRAWING USES THIRD ANGLE PROJECTION

THIS DOCUMENT CONTAINS PROPRIETARY INFORMATION AND SUCH INFORMATION MAY NOT BE REPRODUCED OR DISCLOSED FOR ANY PURPOSE OR USED TO PRODUCE THE ARTICLE OR SUBJECT WITHOUT WRITTEN PERMISSION FROM COTI GLOBAL SENSORS, INC.

TOLERANCES UNLESS OTHERWISE SPECIFIED
 .XX±.01
 .XXX±.005
 FRACTIONS±1/16"
 ANGLES: ±1/2"

APPROVALS		DATE
DRAWN: MTS		10/01/08
CHECKED: MB		10/01/08
ENGINEER: AA		10/01/08
APPROVED: AA		10/01/08
MATERIAL		
STAINLESS STEEL		

SCALE	SIZE	PART/DRAWING NO.	REV.
NONE	B	DOD-CG-SP9M	A
MODEL CG-SP9M			SHEET 1 OF 1