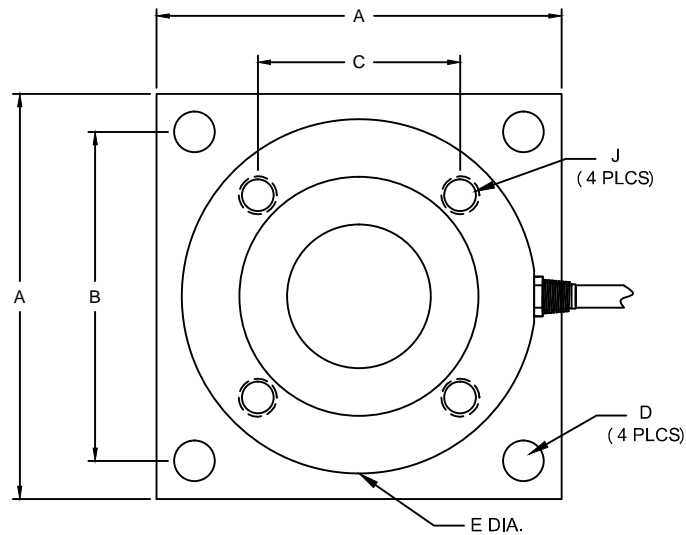


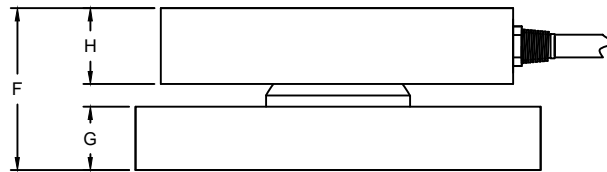
REVISIONS							
ZONE	LTR.	DESCRIPTION	DATE	ECN	BY	CKD	APVD
-	-	INITIAL DRAWING	10/19/19	2019-40	TB	AT	AT
-	A	ADDED #686 AND #687 TOP PLATES	10/26/20	2020-17	TB	AT	AT



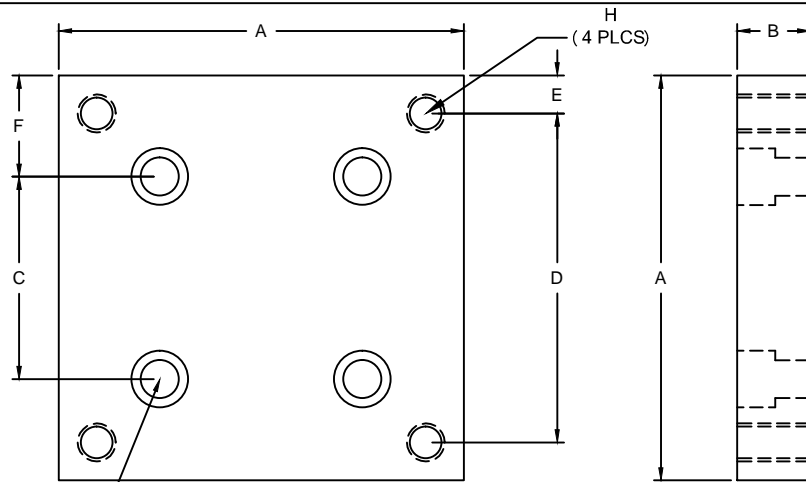
PERFORMANCE SPECIFICATIONS:

1. CAPACITIES: 1K, 2.5K, 5K, 10K, 15K, 20K, 50K,
2. RATED OUTPUT: 3.00 mV/V $\pm 0.25\%$.
3. SAFE OVERLOAD: 150% FS.
4. EXCITATION VOLTAGE: 10V AC/DC (15V MAX) .
5. INPUT RESISTANCE: 350 $\pm 35\Omega$.
6. OUTPUT RESISTANCE: 350 $\pm 3.5\Omega$.
7. ZERO BALANCE: $\pm 1.00\%$ FS.
8. SEAL TYPE: ENVIRONMENTALLY SEALED IP67
9. NON-LINEARITY: $\pm 0.05\%$ FS.
10. HYSTERESIS: $\pm 0.05\%$ FS.
11. REPEATABILITY: $\pm 0.02\%$ FS.
12. CREEP: $\pm 0.03\%$ FS IN 30 MINUTES.
13. COMPENSATED TEMPERATURE RANGE: -10°C TO +40°C.
14. TEMPERATURE EFFECT ZERO: $\pm 0.0027\%$ FS/°C
15. TEMPERATURE EFFECT ON OUTPUT: $\pm 0.0015\%$ FS/°C
16. INSULATION RESISTANCE: 5000 MEGOHMS.
17. LOAD CELL CABLE: 25FT TEFLON CABLE
18. LOAD CELL WIRING:

- GRN (+EXC)
- BLK (-EXC)
- WHT (+SIG)
- RED (-SIG)
- BRAID/YELLOW: SHIELD



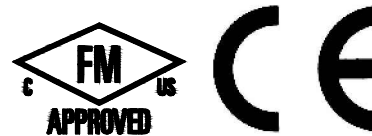
RATED CAPACITY	DIMENSIONS								
	A	B	C	D	E	F	G	H	J
1K-10K	4.00	3.25	2.00	0.40	3.50	1.35	0.38	0.75	3/8-16 UNC
15K	4.00	3.25	2.00	0.40	3.50	1.60	0.63	0.75	3/8-16 UNC
20K-50K	7.00	5.50	3.75	0.63	6.00	2.48	0.75	1.30	1/2-13 UNC



PART NUMBER	RATED CAPACITY	DIMENSIONS							
		A	B	C	D	E	F	G	H
#686	1K-15K	4.00	0.72	2.00	3.25	0.38	1.00	3/8 BOLT	3/8-16 UNC
#687	20K-50K	7.00	0.97	3.75	5.50	0.75	1.62	1/2 BOLT	5/8-11 UNC

BOLTS SIZES

- #686 SS 3/8-16 x 7/8"
- #687 SS 1/2-13 x 1-1/2"



DO NOT ALTER WITHOUT AGENCY NOTIFICATION
Coti Global Sensors
 MANUFACTURING
 Weighing Products Worldwide

TOP PLATE
#686 (1K-15K) AND #687 (20K-50K)

THIS DRAWING USES THIRD ANGLE PROJECTION THIS DOCUMENT CONTAINS PROPRIETARY INFORMATION AND SUCH INFORMATION MAY NOT BE REPRODUCED OR DISCLOSED FOR ANY PURPOSE OR USED TO PRODUCE THE ARTICLE OR SUBJECT WITHOUT WRITTEN PERMISSION FROM COTI GLOBAL SENSORS, INC.	TOLERANCES UNLESS OTHERWISE SPECIFIED .XX \pm 0.02" .XXX \pm 0.005" .XXXX \pm 0.0002" FRACTIONS $\pm 1/16$ " ANGLES DEG. $\pm 1/8$ "	APPROVALS		DATE
		DRAWN: TB	AT	10/19/19
		CHECKED: AT	JS	10/19/19
		ENGINEER: JS	AT	10/19/19
MATERIAL: STAINLESS STEEL		SCALE: NONE SIZE: B PART/DRAWING NO. DOD-CG-TWM REV. A		
MODEL: CG-TWM		SHEET 1 OF 1		