

BM8D



OIML test certificate no. TC7869 Revision 2
C of C no R60/2000-NL1-12.11

Certificate no. 10-056A1

- Stainless steel shear beam load cell (150kg and 300 kg bending beam load cells)
- Hermetically sealed IP68
- Suitable for floor scales, vehicle-test line, hopper scales and other electronic weighing devices
- High accuracy
- Wide range of capacities

Available models

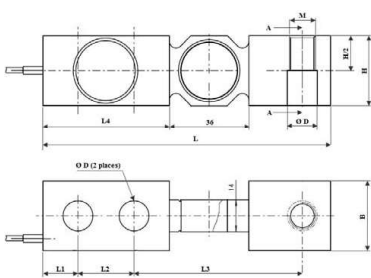
xxkg	C3/C5/C6/A5M/B10S/B10M	BM8D-xx-xxkg-6B
xxt	C3/C5/C6/A5M/B10S/B10M	BM8D-xx-xt-6B
xxlb	A5M/B10S/B10M	BM8D-xx-xx-6YB
xxklb	A5M/B10S/B10M	BM8D-xx-xxK-6YB

50kg-300kg approved by OIML C3.
3.0t-15t approved by OIML C5.
500kg-2.5t approved by OIML C6.
500KG-10t (1klb-20Klb) S1 type approved by NTEP A5S/A5M/B10S/B10M.

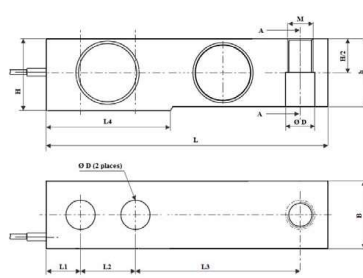
Specification

Accuracy class		OIML R60 C3	OIML R60 C4	OIML R60 C5	OIML R60 C6
Output sensitivity (= FS)	mV/V	2.0 ± 0.004		3.0 ± 0.008	
Maximum capacity (Emax)	t	0,15, 0,3, 0,5, 1, 1,5, 2, 2,5, 3, 5, 7,5, 10			0,5, 1, 1,5, 2,2,5
Maximum number of load cell intervals (nLC)	N,max	3000	4000	5000	6000
Ratio of minimum LC verification interval Y = Emax / vmin	Y	10000	15000	20000	20000
Combined error	%FS	± 0.0230	± 0.0175	± 0.0140	± 0.0116
Minimum dead load	of Emax	0%			
Safe overload	of Emax	150 %			
Ultimate overload	of Emax	300 %			
Zero balance	%FS	± 1.0			
Excitation, recommended voltage	V	5 ~ 12(DC)			
Excitation maximum	V	18(DC)			
Terminal resistance, input	Ω	350 ± 3,5			
Terminal resistance, output	Ω	350 ± 3,5			
Insulation impedance	MΩ	≥ 5000 (at 50VDC)			
Temperature range, compensated	°C	-10 ~ +40			
Temperature range, operating	°C	-35 ~ +65			
Storage temperature	°C	-40 ~ +70			
Element material		Stainless steel			
Recommended torque on fixation bolts	N,m	M12: 75	M20:450	M24:750	
Ingress Protection (according to EN 60529)		IP68			
ATEX classification (optional)		II1G Ex ia IIC T4	II1D Ex iaD 20 T73°C C	II3G Ex nL IIC T4	

Dimensions in mm



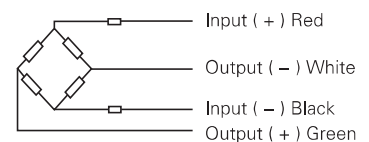
100kg -300kg (Bending)



Other capacities (Shear)

Capacity	L	L1	L2	L3	L4	B	H	h	ΦD	ΦD1	Φd1	Φd2	M
0.15t-0.3t						31,3 (1,23)		-					
0.5t	130 (5,12)	15,7 (0,62)	25,4 (1,0)	76,2 (3,0)	57,1 (2,25)	31,1 (1,22)	31,3 (1,23)	24,8 (0,98)	13,5 (0,53)	18 (0,71)	4 (0,16)	2 (0,08)	M12
1t								26,0 (1,024)					
1,5t - 2t						31,3 (1,23)		28,0					
2.5t- 5t	171 (6,75)	19 (0,75)	38,1 (1,5)	95,2 (3,75)	76,2 (2,024)		36,8 (1,45)	34,8 (1,37)	20,5 (0,81)	25 (0,98)	4 (0,16)	2 (0,08)	M20
7.5t-10t	222 (8,75)	25,4 (1,0)	50,8 (2,0)	120,7 (4,75)	101,6 (2,024)	49,5 (1,95)	49,5 (1,95)	47,5 (1,87)	26,9 (1,06)	-	-	-	M24

Wiring



- Shielded, 4 conductor cable.
- Cable diameter: Φ5mm.
- Standard cable length: 5m.
- Shield not connected to element.