

Viewer: PC Software for Indicator Emulation

Overview

Use Rinstrum’s free software tools to emulate the indicator on your computer.

View300 - for R320/R323 and X320

- Allows for fast simple indicator setup via a PC. View300 displays the complete menu structure of the indicator on the PC with convenient drop down menus for setting selection.
- Enter custom print strings through Viewer

R400 Viewer - Fast efficient R400 Indicator setup via PC

- Allows for fast simple indicator setup via a PC. R400 Viewer displays the complete menu structure of the indicator on the PC with convenient drop down menus for setting selection.

Save400 - Reading and writing Indicator setup

- Save400 is a software tool that reads and writes R400 indicator setup and configuration - this allows for a setup to be exported for update and then re-imported.

C500 Viewer

- Allows for fast simple indicator setup via a PC

Viewer/ Indicator variants

C500 series	C500 Viewer
R400 Series	R400 Viewer and Save400
X320	View300
R300 Series	View300
5000	Viewer V1 Hardware/V2 Hardware
5100	5100 Viewer
5200	5200 Viewer
5230	5230 Viewer
1203	1203 Viewer

1. Establishing a temporary connection to a PC using a rinLINK

The rinLINK provides an optical serial connection onto the front of most Rinstrum indicators and small remotes (C500, R400, R300, X320 and D300).

When using a USB rinLINK (part number A10012) for the first time on a PC, the driver will have to be loaded. It is available for download on the Support Page on www.rinstrum.com
<https://rinstrum.com/support/general-reference/>



Connect the USB end of rinLINK to PC and optical head to unit for connection.

2. Download Viewer Software

- Visit www.rinstrum.com
- Select Product Page relating to the Viewer that is required – scroll to Product Downloads section

Product Downloads

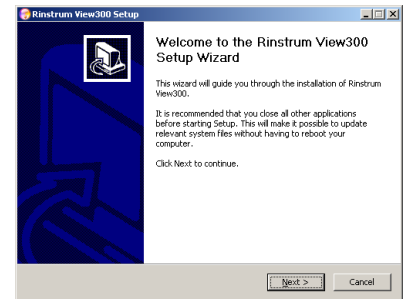
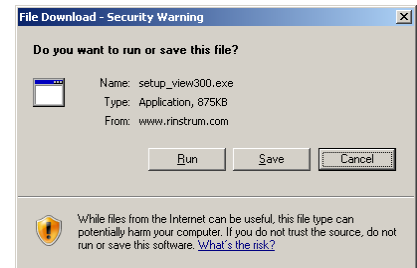
The following files are available for download for the **R300 and X320 Series Viewer PC Software**. Ensure you select the correct documentation for your unit's software version. Check back regularly for software and other updates.

To download files, please click on a filename below. A save dialogue box should appear allowing you to specify your save location.

If a save dialogue box does not appear, right click on the link and select save target as.

Files

- ▶ **R300 Viewer Software**
20/09/2018 - 841KB (ZIP) file - R300-510-225-M09



- Select the Viewer Software and **run** to install on your PC, follow prompts

3. Establish PC-Unit connection

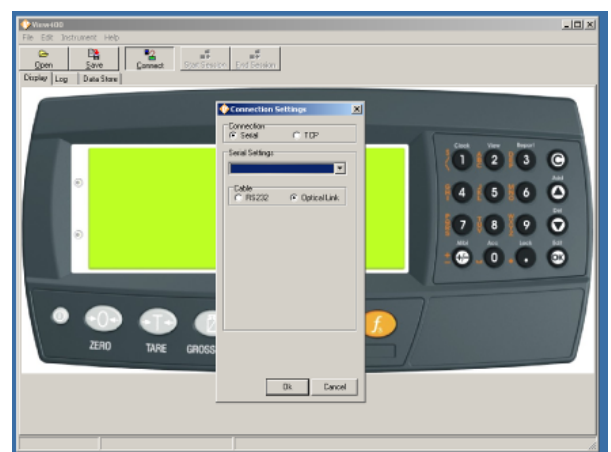
- rinLINK connections for C500, R400, R300, X320 etc.
- Ethernet connection for C500 and R400 (with optional module)
- For 5000 series and 1203 remote displays connect via a serial communications link to your PC - refer to reference manual for unit.



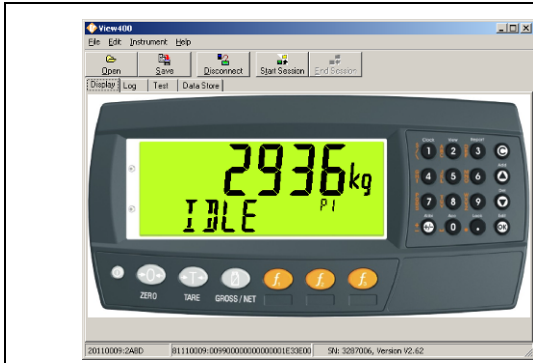
4. Run Viewer Program

Start the viewer program and press Connect.

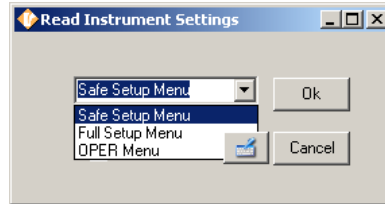
- Serial Connection (rinLINK) : Viewer will detect the communication ports. Click the down arrows box and select the communication port that the rinLINK is connected to.
- TCP Connection : Enter IP address of the instrument and the port. You can use Device Finder tool in viewer to find the IP address and connect.
- Click Start Session/Read settings to view and edit indicator settings.
- It is a good idea to save the .RIS file as a backup first before changing settings.
- The Display tab displays the indicator and allows for buttons to be clicked on the PC the same as using the keys on the indicator.



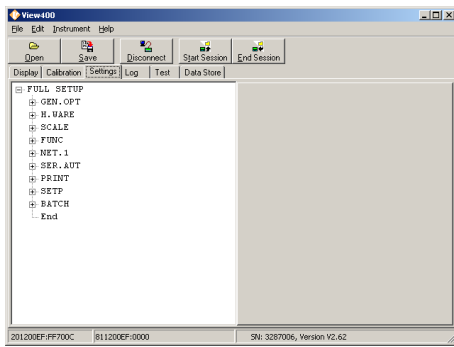
5. Using Viewer



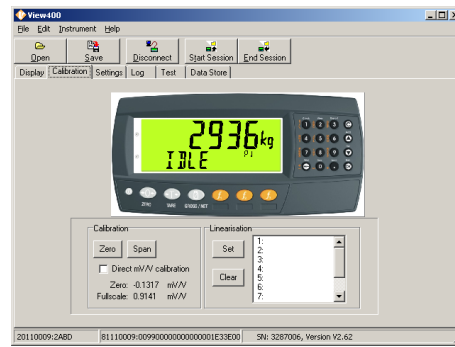
Start Session to go into setup - select type of session
Safe Setup/Full Setup/Operator Menu



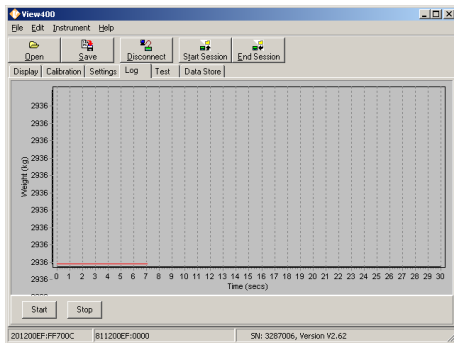
Full Setup menu tree is available through the
Settings Tab



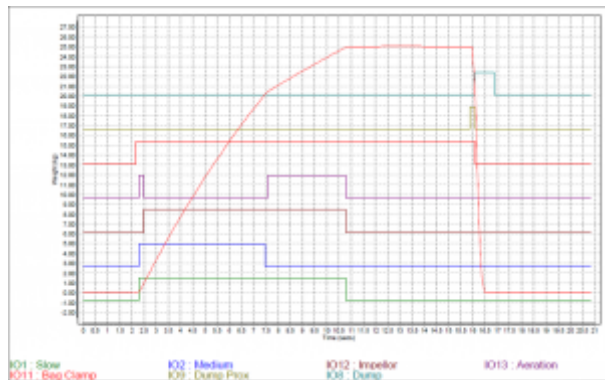
Calibration and Linearisation data is available
through the **Calibration Tab**



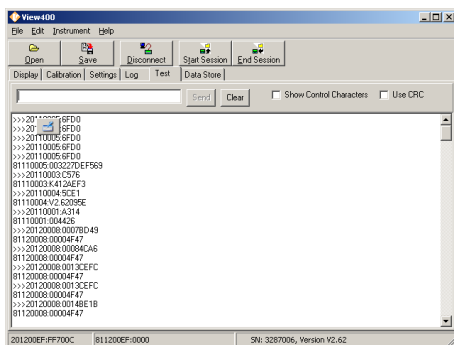
Log to view real time trace of weight and digital
points against time



Use **left mouse button** to select an area and zoom
in on Log data, left/right arrows scroll horizontally



Send commands via the **Test** page



Download, view and extract/save **DSD** records

