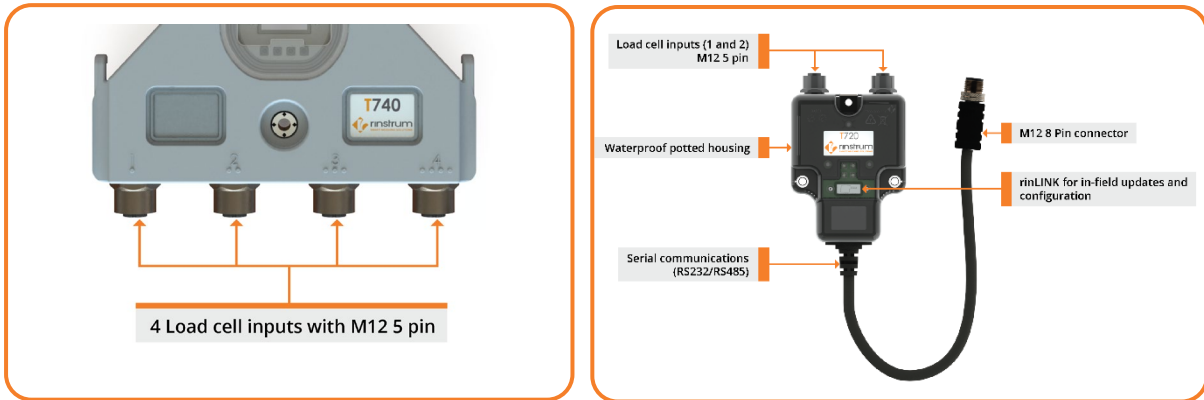


# T Series - TBOX Multichannel Loadcell Interfaces Data sheet



- Digital weigh transmission using serial communication.
- RS232 and RS485 serial options for communication.
- M12 waterproof loadcell connector for outdoor usage.
- Potted waterproof housing

The TBOX converts 2 or 4 analogue load cells signals to a multichannel digital signal back to a controller. Each load cell signal is available at the controller. The TBOX is commonly used on multi-head machines to save on cabling all analogue channels back individually. The digital signal uses a daisy chain cabling configuration further saving on cabling complexity.

The TBOX is fitted with M12 connectors to provide easy connectivity. The M12 connection for the loadcells is a standard 5 pin connector and the M12 digital tail uses an 8-pin standard. Rinstrum supplies 8 pin M12 T connectors for simple ring networking with RS485. RS232 version can be used for single point applications working back to a PC or PLC.

The TBOX is ideal for machine builders with multiheaded weighing elements and is available through a design consultation.



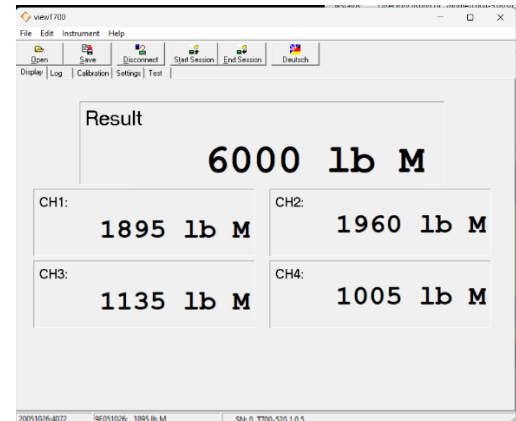
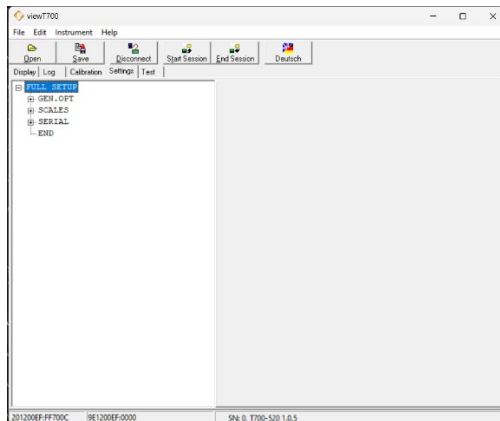
## Smart Weighing

Configurability via a standard rinLINK allows the TBOX to be fully potted – perfect for harsh environments.

*... now that's smart weighing!*

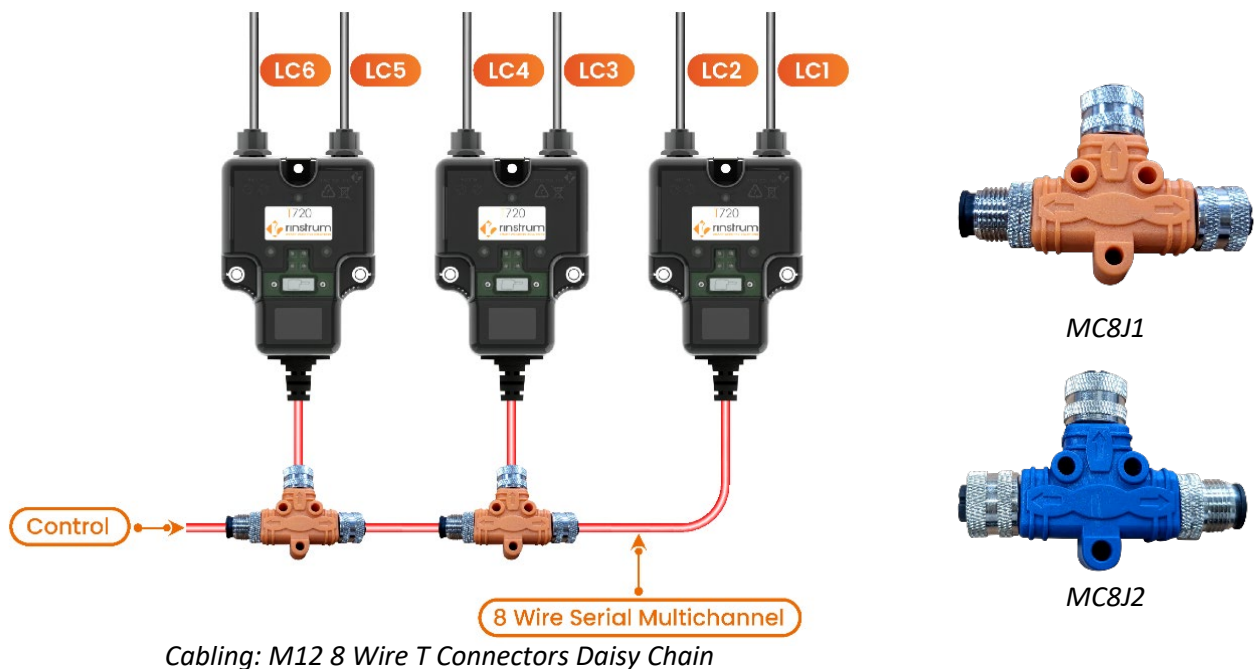
## How do you setup a TBOX?

- A Rinstrum rinLINK provides a magnetically coupled optical link on the unit, for a convenient temporary connection to a laptop
- The serial connection allows for download of software upgrades
- Running the free Viewer programme on the laptop gives easy access to the setup menu tree.



## How do you cable multiple RS485 TBOX together?

- The serial connection on the TBOX uses 8 wires with an M12 connector.
- The RS485 digital connection can be connected in a ring configuration to reduce cabling using the T junction (MC8J1).
- Alternately a multi drop configuration can be used if preferred or if there are limitations with the PLC (MC8J2 junction is used to support the cabling).
- Rinstrum has a range of 8pin M12 connectors and cables.



## What types of controllers can I connect to?

- The Rinstrum R457 with custom Lua designed for you application
- Customer supplied equipment capable of operating as an RS232/ RS485 master
- Each channel of weighing data is accessed using a unique serial address



## Specifications

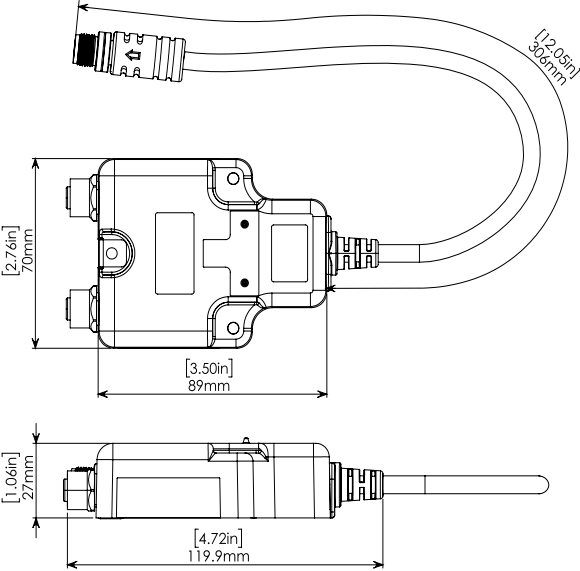
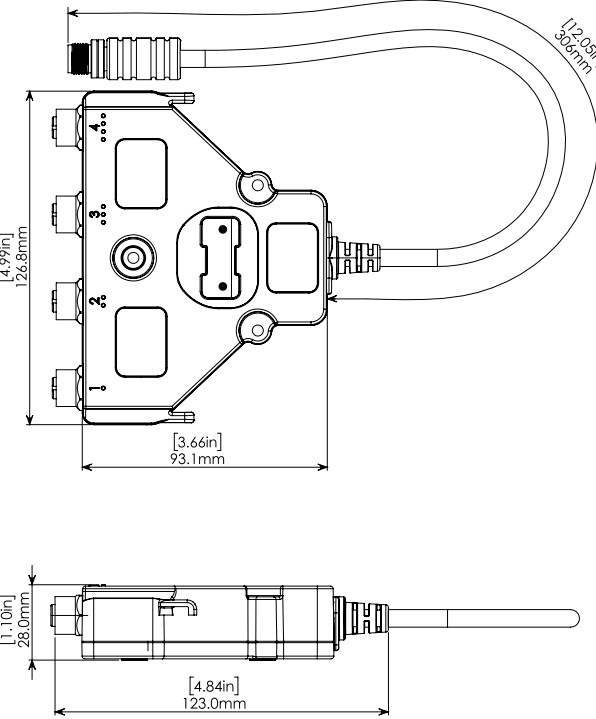
	2 Channel TBOX - T720	4 Channel TBOX - T740
<b>Resolution</b>	min 0.25 $\mu\text{V}/\text{division}$	
<b>No. of Channels</b>	2	4
<b>Zero Cancellation</b>	$\pm 2.0 \text{ mV/V}$	
<b>Span Adjustment</b>	0.1mV/V to 3.0mV/V full scale	
<b>Excitation</b>	3.3V VDC for up to 4 x 350 ohm loadcells	
<b>A/D Type</b>	24 Bit Sigma Delta – 8,388,608 internal counts	
<b>Digital Filter</b>	FIR: 80 dB, IIR 0..8 stage	
<b>Conv Rate</b>	10-300 Hz	
<b>Stability/Drift</b>	Zero: < 0.1 $\mu\text{V}/^\circ\text{C}$ (+ 8ppm of deadload max) Span < 8 ppm/ $^\circ\text{C}$ , Linearity < 20ppm, Noise < 0.2 $\mu\text{Vp-p}$	
<b>Power input</b>	5 – 15 VDC in (Power-over-Ethernet M12 cabling)	
<b>Interfaces</b>	Loadcell - 5 pin M12 connector Serial Connection - 8 pin M12 connector for RS485 Serial Connection - 5 pin M12 connector for RS232	
<b>Digital Communications</b>	RS232, RS485 * #	
<b>Setup</b>	rinLINK	
<b>Case Materials</b>	Potted PMMA	
<b>IP Rating</b>	IP66, IP68	
<b>Software</b>	T700-515	T700-520

Specifications are subject to variation for improvement without notice - Illustrations are indications only and variation may be evident between products.

\* Not all options are available on each variant

# CAN options are possible

## Dimensions

2 Channel TBOX - T720	4 Channel TBOX - T740
 <p>Technical drawing of the 2 Channel TBOX - T720. The top view shows a rectangular unit with a cable attached to the right side. Dimensions are: height [2.76in] 70mm, width [3.50in] 89mm, and cable length [12.05in] 302mm. The side view shows a depth of [1.06in] 27mm and a total length of [4.72in] 119.9mm.</p>	 <p>Technical drawing of the 4 Channel TBOX - T740. The top view shows a rectangular unit with a cable attached to the right side. Dimensions are: height [4.99in] 126.8mm, width [3.66in] 93.1mm, and cable length [12.05in] 302mm. The side view shows a depth of [1.10in] 28.0mm and a total length of [4.84in] 123.0mm.</p>